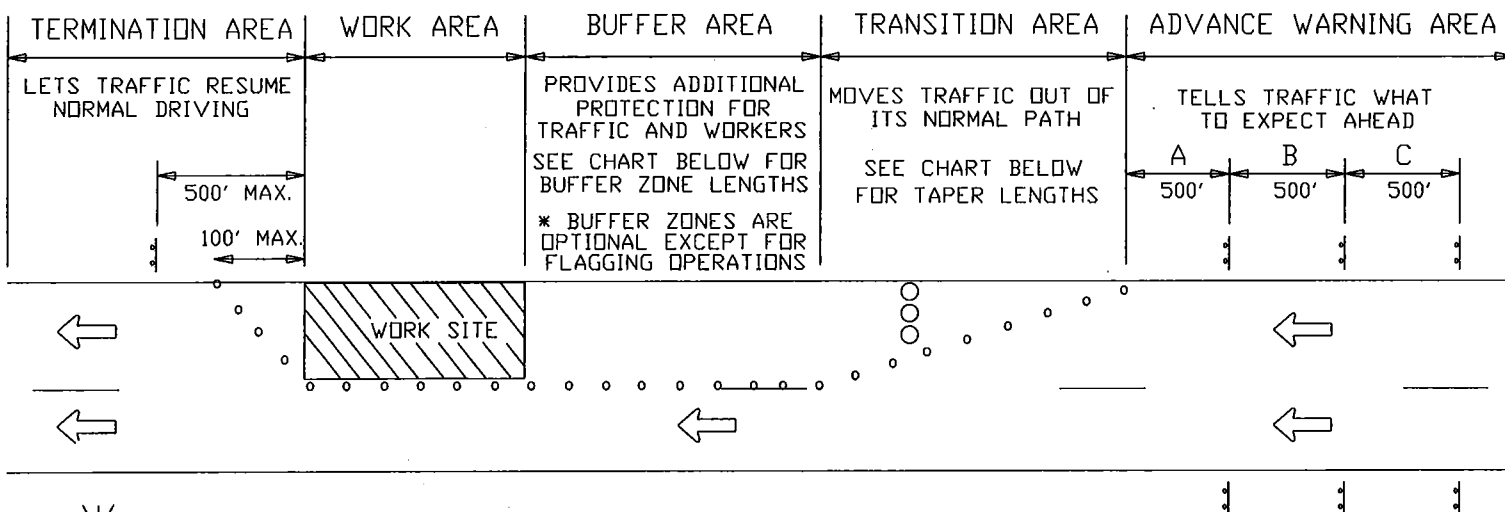


SPEED M.P.H.	MINIMUM DISTANCE FROM TAPER TO FIRST SIGN	ADDITIONAL SIGNS IN SERIES TO BE SPACED AT A MINIMUM				MINIMUM COMBINED ADVANCED WARNING
	A	B	C	D		
25	200'	200'	200'			600'
30-35	300'	300'	300'			900'
40	500'	500'	500'			1500'
45-65	800'	700'	1100'	2600' (OPTIONAL)		2600'

EXAMPLE: TWO LANES, ONE-WAY ROADWAY, POSTED SPEED LIMIT IS 30 M.P.H.



\* NOTE: THE POSTED SPEED PLUS 10 MPH SHOULD BE USED FOR THE DESIGN OF SIGN SPACING, TAPER AND BUFFER LENGTHS

GUIDELINES FOR TAPER LENGTHS					
SPEED M.P.H.	TAPER LENGTH			NUMBER OF DEVICES FOR TAPER	SPACING OF DEVICES ALONG TAPER IN FEET
	LANE WIDTH IN FEET				
	10	11	12		
20	70	75	80	5	20
25	105	115	125	6	25
30	150	165	180	7	30
35	205	225	245	8	35
40	270	295	320	9	40
45	450	495	540	13	45
50	500	550	600	13	50
55	550	605	660	13	55
60	600	660	720	13	60
65	650	715	780	13	65

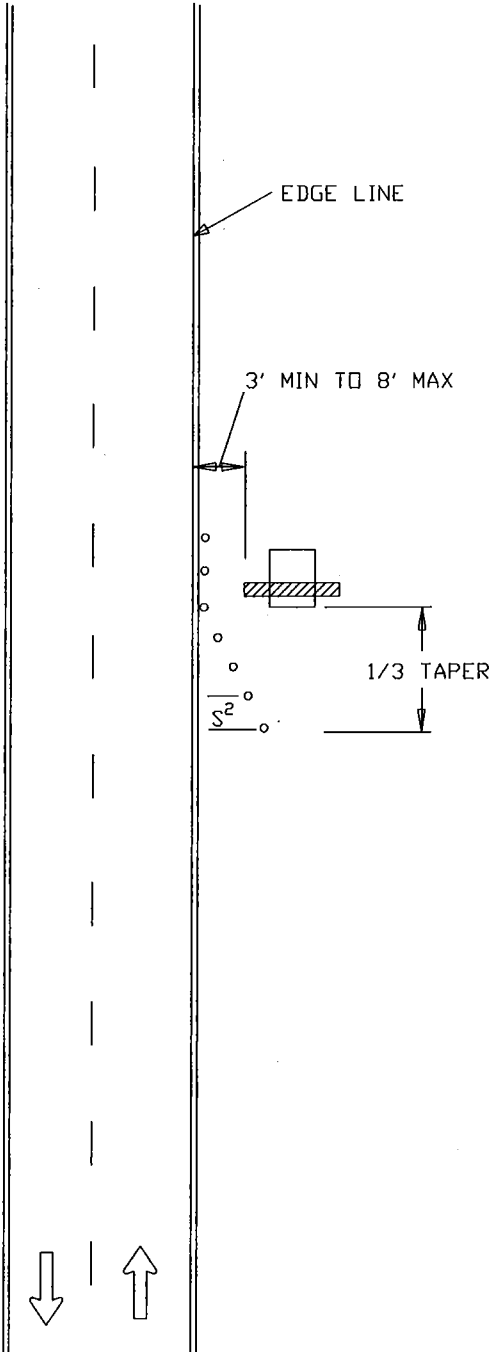
GUIDELINES FOR BUFFER ZONE LENGTHS	
SPEED (MPH)	LENGTH (FEET)
20	35
25	55
30	85
35	120
40	170
45	220
50	280
55	335
60	415
65	485

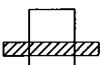
REVISION BY	DATE	APPROVAL

DATE	TRAFFIC OPERATIONS SECTION MONTGOMERY COUNTY, MARYLAND
07-01-16	
DES. BY	MCDPWT
DRAWN BY	
TCLE	APPROVED
SCALE	
NTS	CHIEF, TRAFFIC OPERATIONS SECTION
	STANDARD TCP-100.01 — OF — SHEETS

NOTES:  
PVMS MESSAGES AND PLACEMENT OF THIS  
DEVICE SHALL BE APPROVED BY THE  
TRAFFIC OPERATIONS SECTION

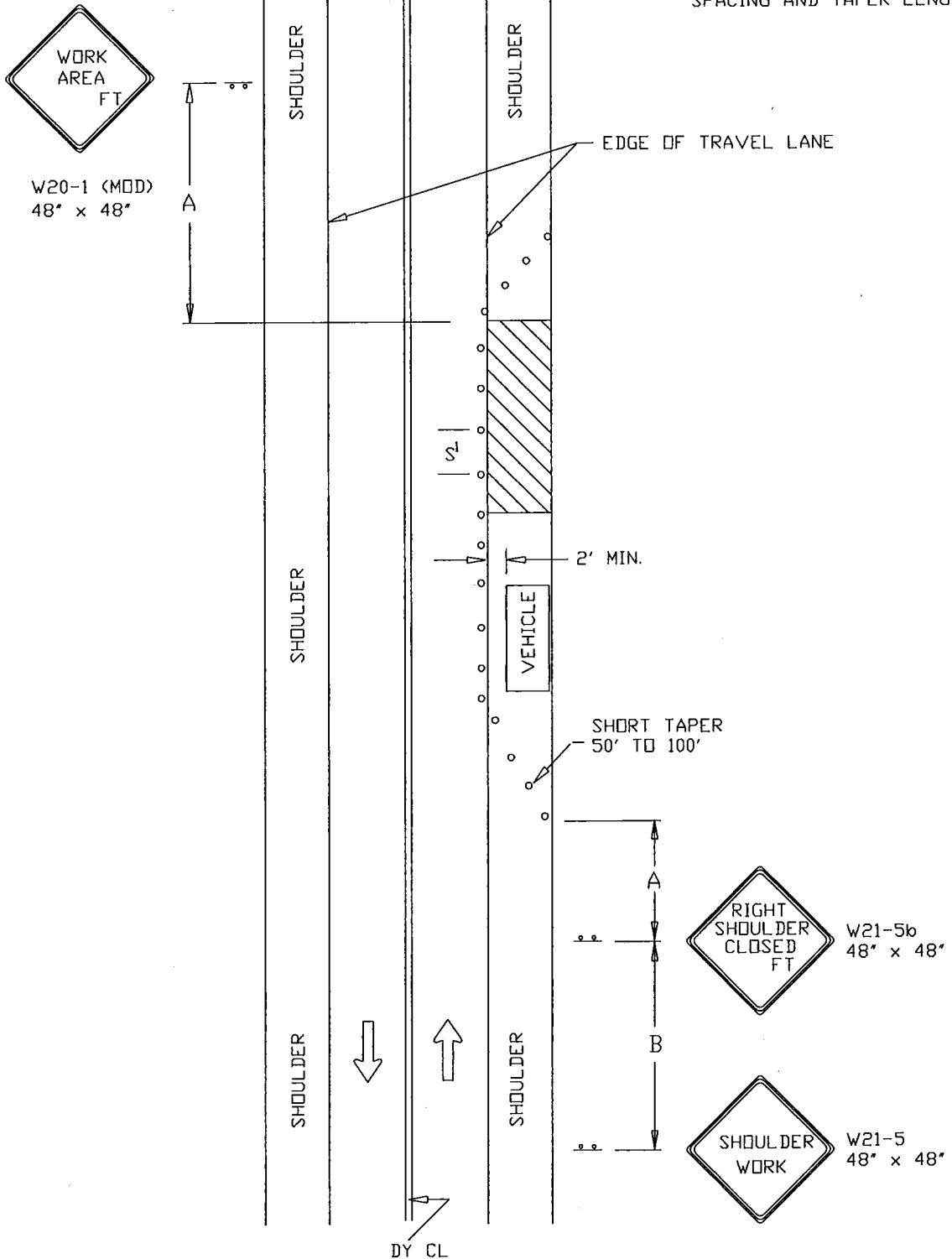
THE EDGE OF THE SIGN BOARD OF THE  
PVMS SHALL BE PLACED A MINIMUM OF  
3' AND NO MORE THAN 8' FROM EDGE LINE



- ← DIRECTION OF TRAFFIC
-  PORTABLE VARIABLE MESSAGE SIGN (PVMS)
- TRAFFIC DRUMS OR CONES
- $S^2=10$  FT.

			DATE	TRAFFIC OPERATIONS SECTION MONTGOMERY COUNTY, MARYLAND	
			07-01-16		
			DES. BY	PORTABLE VARIABLE MESSAGE SIGN PLACEMENT	
			MCDPWT		
REVISION BY	DATE	APPROVED	DRAWN BY	APPROVED  _____ CHIEF, TRAFFIC OPERATIONS SECTION STANDARD TCP-100.02      ____ OF ____ SHEETS	
			TCLE		
			SCALE		
			NTS		

REFER TO TCP 100.01 FOR SIGN  
SPACING AND TAPER LENGTHS



← DIRECTION OF TRAFFIC

•• SIGN

▨ WORK SITE

○ TRAFFIC DRUMS  
OR CONES

S<sup>1</sup>=30 FT.

S<sup>2</sup>=10 FT.

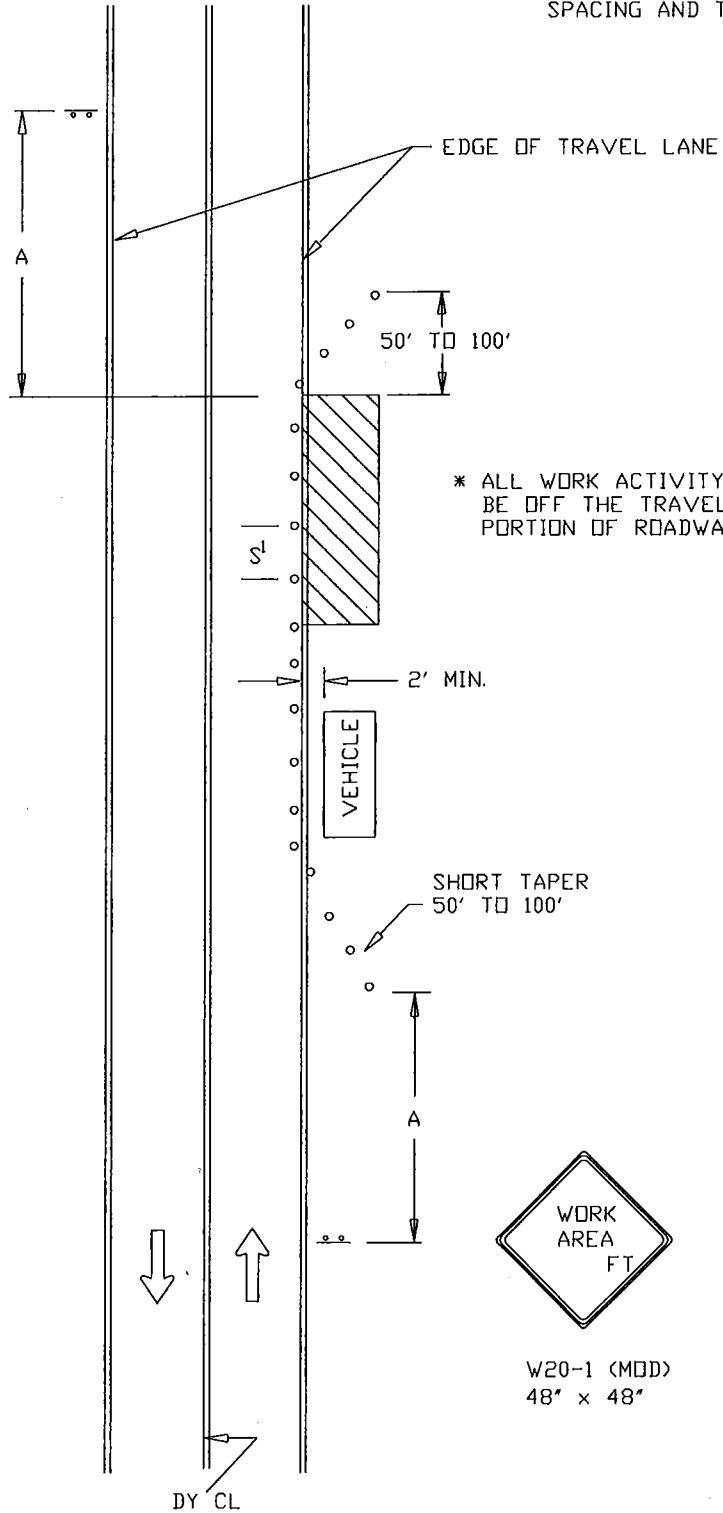
REVISION BY	DATE	APPROVED

DATE 07-01-16	TRAFFIC OPERATIONS SECTION MONTGOMERY COUNTY, MARYLAND
DES. BY MCDPWT	
DRAWN BY TCLE	TRAFFIC CONTROL FOR SHOULDER WORK
SCALE NTS	APPROVED _____ CHIEF, TRAFFIC OPERATIONS SECTION
	STANDARD TCP-101.01 _____ OF _____ SHEETS

REFER TO TCP 100.01 FOR SIGN  
SPACING AND TAPER LENGTHS



W20-1 (MOD)  
48" x 48"



\* ALL WORK ACTIVITY TO  
BE OFF THE TRAVELED  
PORTION OF ROADWAY



W20-1 (MOD)  
48" x 48"



DIRECTION OF TRAFFIC



SIGN



WORK SITE



TRAFFIC DRUMS  
OR CONES

S<sup>1</sup>=30 FT.

S<sup>2</sup>=10 FT.

REVISION BY	DATE	APPROVED

DATE 07-01-16	TRAFFIC OPERATIONS SECTION MONTGOMERY COUNTY, MARYLAND
DES. BY MCDPWT	
DRAWN BY TCLE	TRAFFIC CONTROL FOR WORK ACTIVITY OFF THE ROAD
SCALE NTS	APPROVED _____ CHIEF, TRAFFIC OPERATIONS SECTION
STANDARD TCP-101.02 ____ OF ____ SHEETS	

W20-1  
48" x 48"



A

REFER TO TCP 100.01 FOR SIGN  
SPACING AND TAPER LENGTHS

100'

10'  
MIN.

S<sup>2</sup>

WORK AREA

1/2 TAPER

A



W5-1  
48" x 48"

B



W20-1  
48" x 48"



DY CL



DIRECTION OF TRAFFIC



SIGN



WORK SITE



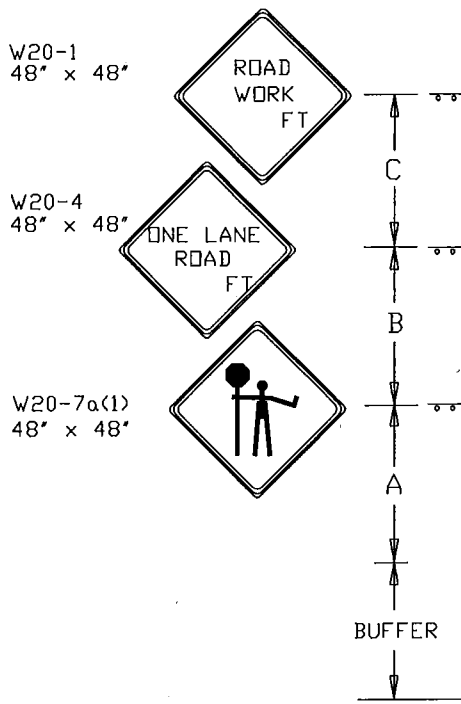
TRAFFIC DRUMS  
OR CONES

S<sup>1</sup>=30 FT.

S<sup>2</sup>=10 FT.

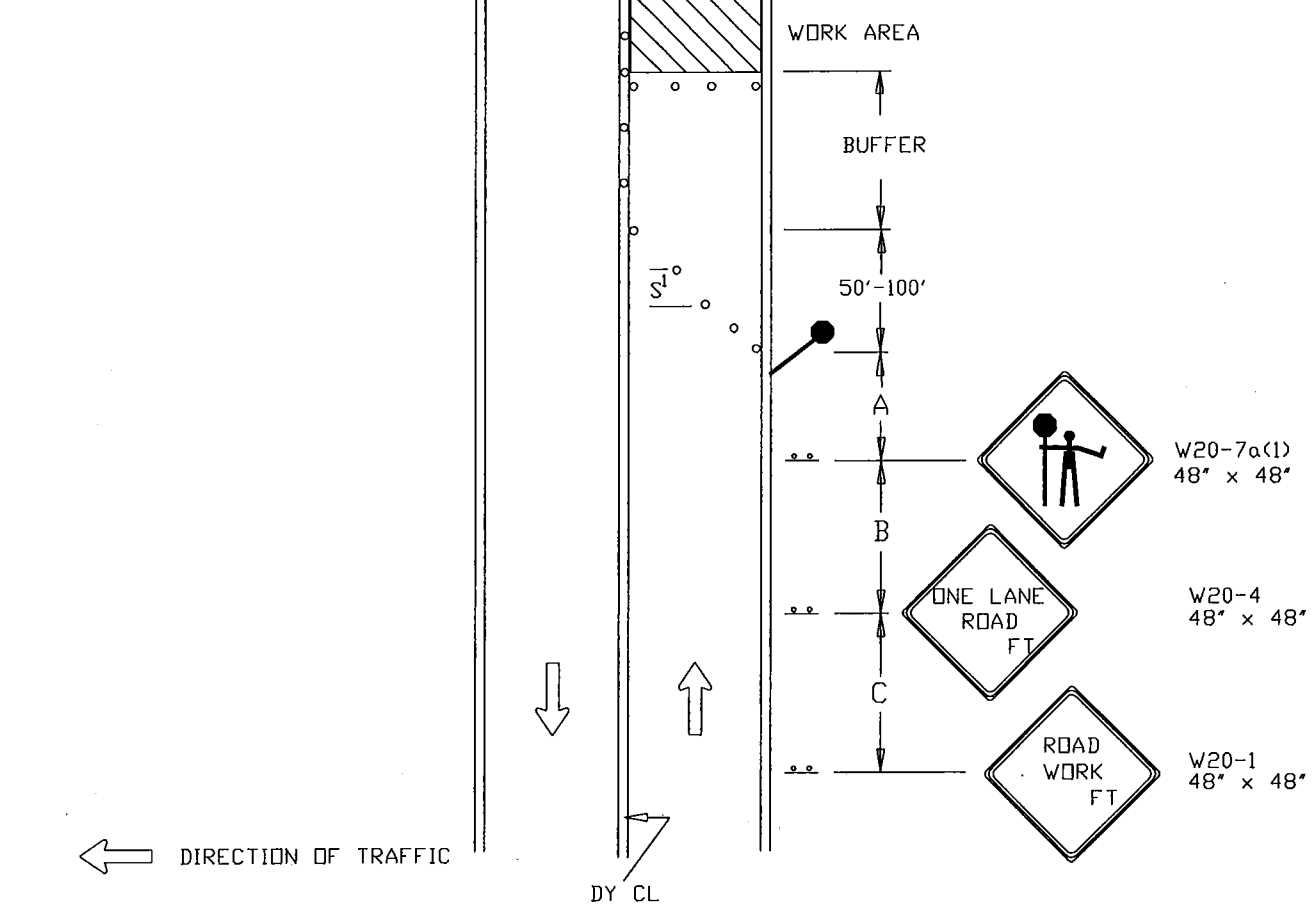
REVISION BY	DATE	APPROVED

DATE 07-01-16	TRAFFIC OPERATIONS SECTION MONTGOMERY COUNTY, MARYLAND
DES. BY MCDPWT	
DRAWN BY TCLE	TRAFFIC CONTROL FOR PARTIAL LANE CLOSURE
SCALE NTS	APPROVED  _____ CHIEF, TRAFFIC OPERATIONS SECTION
	STANDARD TCP-102.01      OF      SHEETS



NOTE: ACCESS POINTS WITHIN LANE CLOSURE SHALL BE CONTROLLED BY FLAGGER(S)

REFER TO TCP 100.01 FOR SIGN SPACING, TAPER LENGTHS AND BUFFER ZONE LENGTHS



			DATE	TRAFFIC OPERATIONS SECTION MONTGOMERY COUNTY, MARYLAND
			07-01-16	
			DES. BY	FLAGGING CONTROL NON - INTERSECTION
			MCDPWT	
REVISION BY	DATE	APPROVED	DRAWN BY	APPROVED
			TCLE	
			SCALE	_____ CHIEF, TRAFFIC OPERATIONS SECTION
			NTS	STANDARD TCP-102.02      ____ OF ____ SHEETS

W20-1  
48' x 48'



W5-1  
48' x 48'



B

A

1/2 TAPER

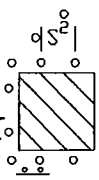
TANGENT

TAPER

RESTRICT  
PARKING

10'  
MIN.

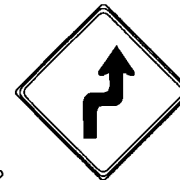
10'  
MIN.



WORK AREA

100'

1/2 TAPER



W1-3R  
48' x 48'



W1-6  
48' x 24'  
ARROW

RESTRICT  
PARKING

A



W1-3L  
48' x 48'

B



W20-1  
48' x 48'



DY CL

REFER TO TCP 100.01 FOR SIGN  
SPACING AND TAPER LENGTHS



DIRECTION OF TRAFFIC



SIGN



WORK SITE



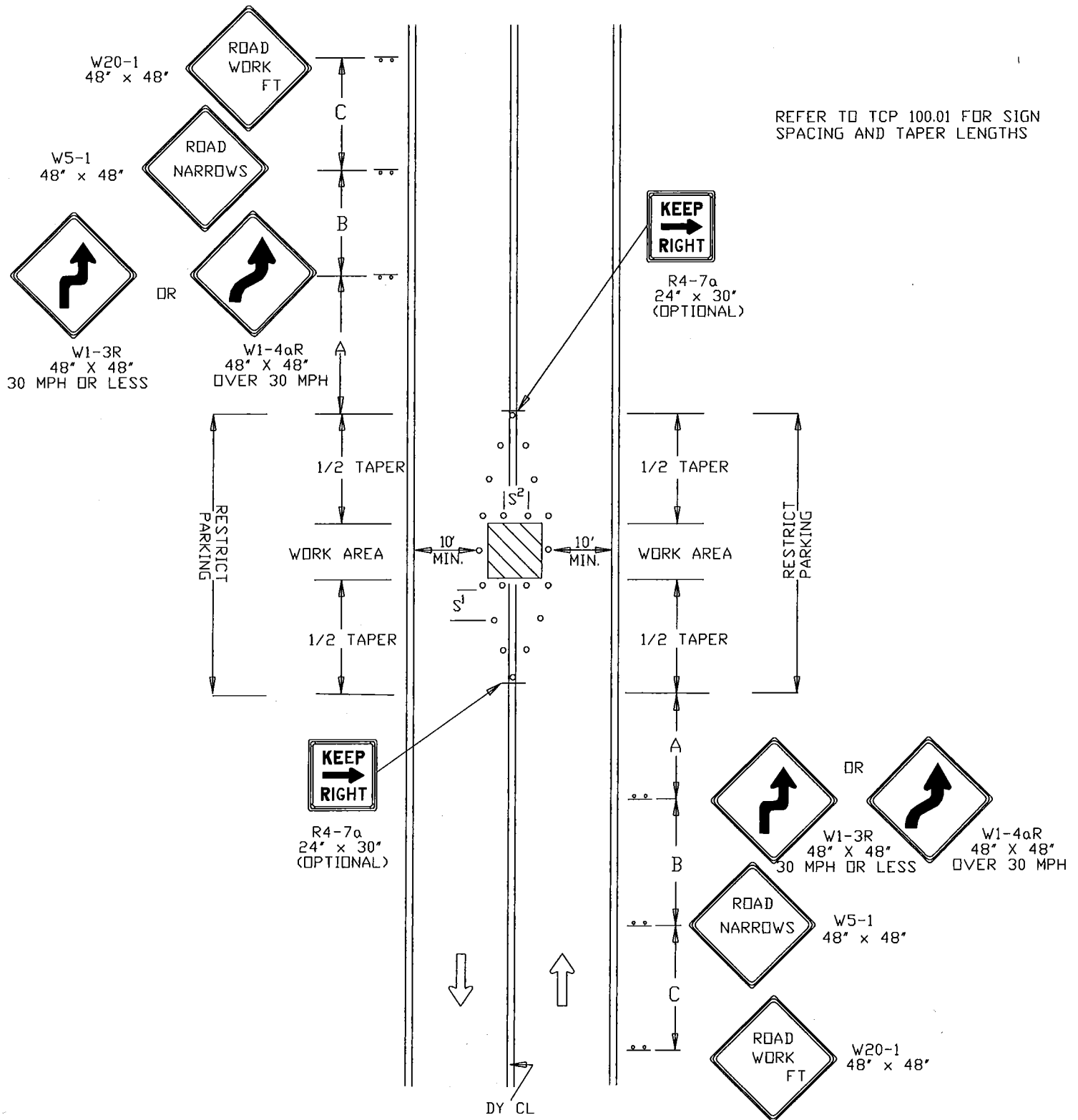
TRAFFIC DRUMS  
OR CONES

S<sup>1</sup>=30 FT.

S<sup>2</sup>=10 FT.

REVISION BY	DATE	APPROVED

DATE	07-01-16	TRAFFIC OPERATIONS SECTION MONTGOMERY COUNTY, MARYLAND
DES. BY	MCDPWT	
DRAWN BY	TCLE	TRAFFIC CONTROL FOR MAINTAINING TWO-WAY TRAFFIC BY ENCRDACHING INTO OPPOSING TRAFFIC FLOW
SCALE	NTS	APPROVED
		CHIEF, TRAFFIC OPERATIONS SECTION
		STANDARD TCP-102.03      OF      SHEETS



← DIRECTION OF TRAFFIC

—●— SIGN

▨ WORK SITE

○ TRAFFIC DRUMS  
OR CONES

S<sup>1</sup>=30 FT.

S<sup>2</sup>=10 FT.

REVISION BY	DATE	APPROVED

DATE	TRAFFIC OPERATIONS SECTION MONTGOMERY COUNTY, MARYLAND	
07-01-16		
DES. BY	TRAFFIC CONTROL FOR MAINTAINING TWO-WAY TRAFFIC WHILE WORKING IN CENTER OF ROADWAY	
MCDPWT		
DRAWN BY	APPROVED	
TCLE		
SCALE	CHIEF, TRAFFIC OPERATIONS SECTION	
NTS		
STANDARD TCP-102.04		— OF — SHEETS



W20-1  
48" x 48"



NOTE:  
WORK VEHICLES SHALL DISPLAY  
ROTATING AND /OR FLASHING LIGHT  
ATOP VEHICLES AND FLASHING  
WARNING LIGHTS IN FRONT AND REAR.

VEHICLES SHALL NOT PROCEED  
MORE THAN THREE (3) MILES AHEAD  
OF THE ADVANCE WARNING  
SIGNS.

VEHICLES SHOULD NOT OCCUPY OR BE  
STOPPED IN A LANE BEYOND A HORIZONTAL  
CURVE OR A VERTICAL CURVE (HILL).

IF STOPPING IS NECESSARY, FLAGGERS SHALL  
BE POSITIONED PRIOR TO STOPPING WORK  
VEHICLES.

THE FLAGGER SHALL BE POSITIONED IN  
ADVANCE OF THE CURVE (HORIZONTAL OR VERTICAL)  
TO PROVIDE MOTORIST ADEQUATE ADVANCE  
WARNING OF TEMPORARY WORK ZONE.

NO WORK OPERATION WHICH INTERFERES  
WITH THE FLOW OF TRAFFIC MAY TAKE PLACE  
DURING PEAK HOURS MONDAY - FRIDAY  
6 A.M. - 9 A.M. AND 3:30 P.M. - 7 P.M.



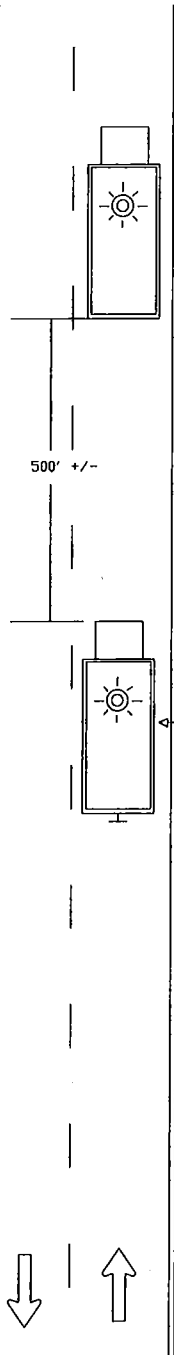
DIRECTION OF TRAFFIC



SIGN



FLASHING OR ROTATING LIGHT



OPTIONAL  
SHADOW VEHICLE



W20-1  
48" x 48"  
MOUNTED ON BACK  
OF SHADOW VEHICLE

SLOW TRAFFIC  
AHEAD

W23-1  
48" x 24"  
OPTIONAL SIGN FOR  
SHORT DURATION

			DATE 07-01-16	TRAFFIC OPERATIONS SECTION MONTGOMERY COUNTY, MARYLAND	
			DES. BY MCDPWT	TRAFFIC CONTROL FOR MOBILE OPERATION ( <15 MIN )	
REVISION BY	DATE	APPROVED	DRAWN BY TCLE	APPROVED	
			SCALE	CHIEF, TRAFFIC OPERATIONS SECTION	
			NTS	STANDARD TCP-102.05      OF      SHEETS	

NOTE:  
WORK VEHICLES SHALL DISPLAY  
ROTATING AND /OR FLASHING LIGHT  
ATOP VEHICLES AND FLASHING  
WARNING LIGHTS IN FRONT AND REAR.

VEHICLES SHALL NOT PROCEED  
MORE THAN THREE (3) MILES AHEAD  
OF THE ADVANCE WARNING  
SIGNS.

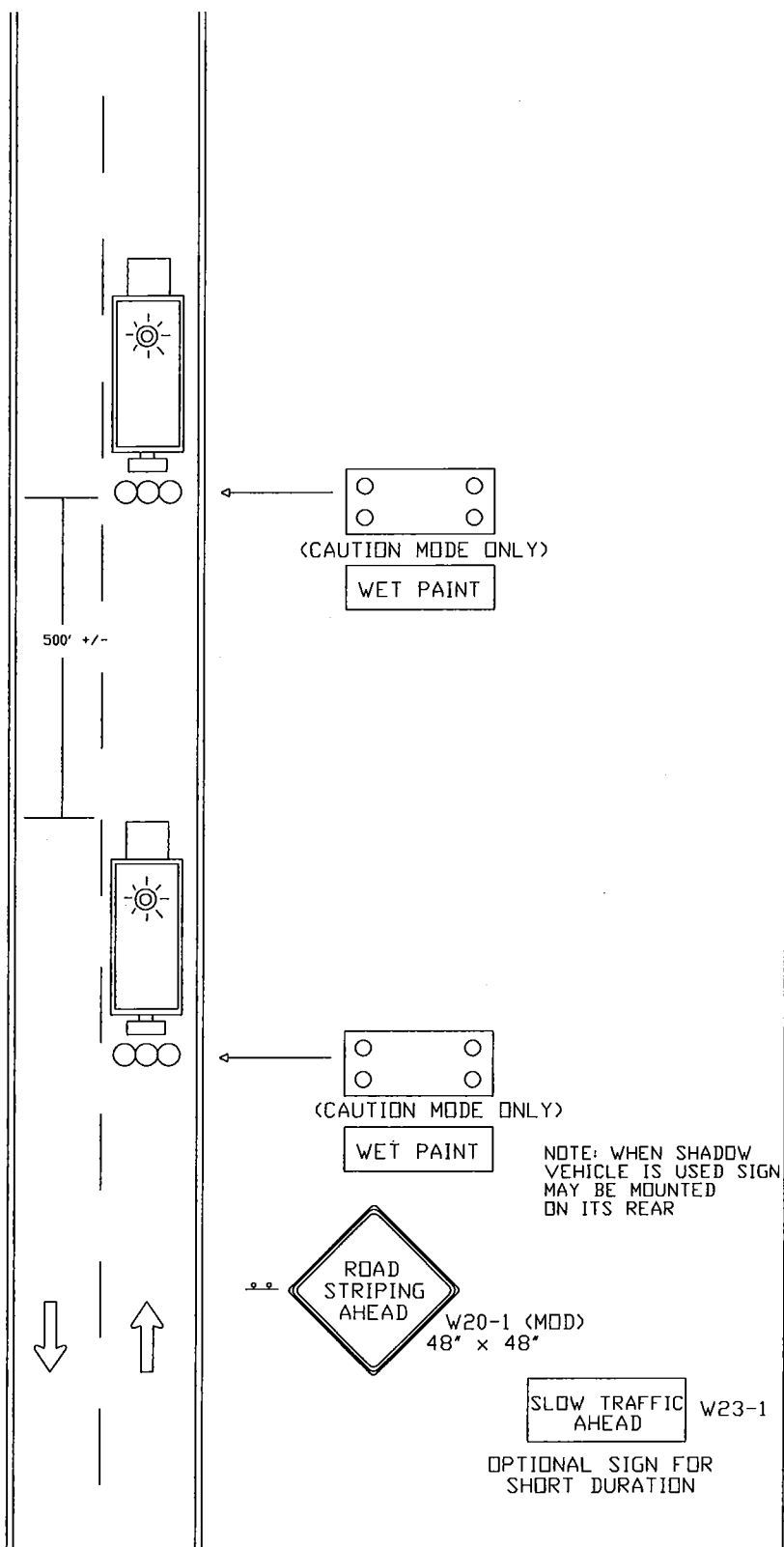
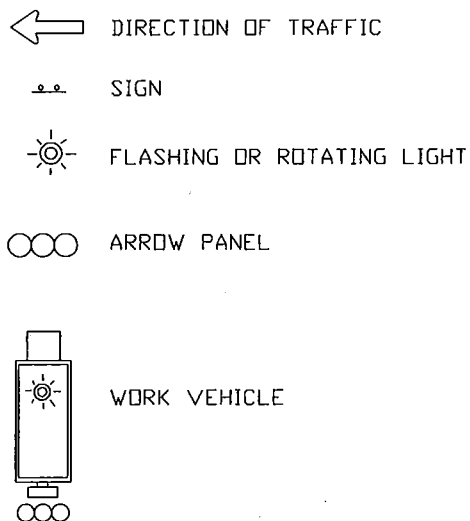
VEHICLES SHOULD NOT OCCUPY OR BE  
STOPPED IN A LANE BEYOND A HORIZONTAL  
CURVE OR A VERTICAL CURVE (HILL).

IF STOPPING IS NECESSARY, FLAGGERS SHALL  
BE POSITIONED PRIOR TO STOPPING WORK  
VEHICLES.

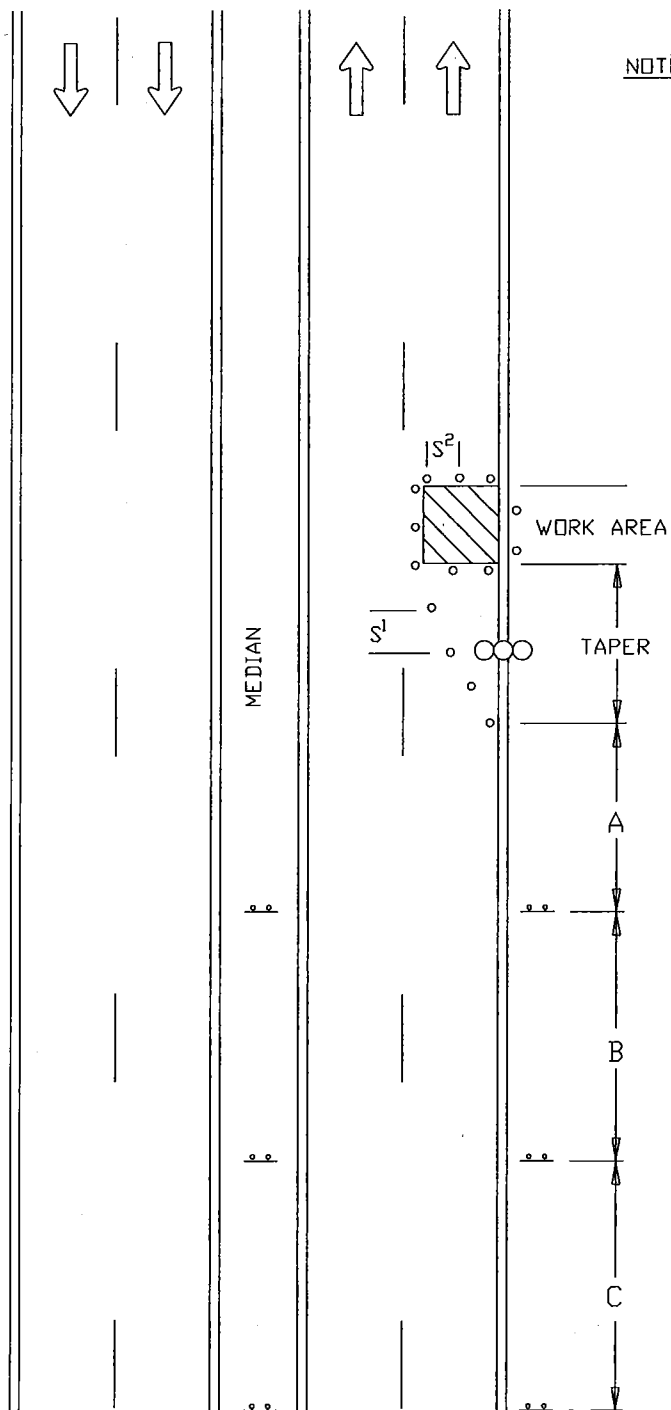
THE FLAGGER SHALL BE POSITIONED IN  
ADVANCE OF THE CURVE (HORIZONTAL OR VERTICAL)  
TO PROVIDE MOTORIST ADEQUATE ADVANCE  
WARNING OF TEMPORARY WORK ZONE.

NO WORK OPERATION WHICH INTERFERES  
WITH THE FLOW OF TRAFFIC MAY TAKE PLACE  
DURING PEAK HOURS MONDAY - FRIDAY  
6 A.M. - 9 A.M. AND 3:30 P.M. - 7 P.M.

FOR PAVEMENT MARKING MATERIALS HAVING  
SLOW DRYING TIMES ADDITIONAL BACK-UP  
VEHICLES TO FOLLOW TRUCK MAY  
BE NECESSARY.

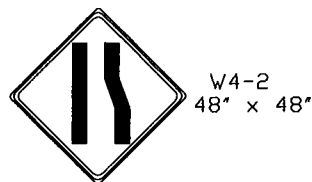


			DATE 07-01-16	TRAFFIC OPERATIONS SECTION MONTGOMERY COUNTY, MARYLAND	
			DES. BY MCDPWT	TRAFFIC CONTROL FOR MOVING MARKING OPERATION (1)	
			DRAWN BY TCLE	APPROVED	
			SCALE	CHIEF, TRAFFIC OPERATIONS SECTION	
			NTS	STANDARD TCP-102.06	
REVISION BY	DATE	APPROVED		OF SHEETS	



NOTE: ACCESS POINTS WITHIN LANE CLOSURE SHALL BE CONTROLLED BY FLAGGER(S)

REFER TO TCP 100.01 FOR SIGN SPACING AND TAPER LENGTHS



W4-2  
48" x 48"



W20-5  
48" x 48"



W20-1  
48" x 48"



DIRECTION OF TRAFFIC



SIGN



WORK SITE



ARROW PANEL



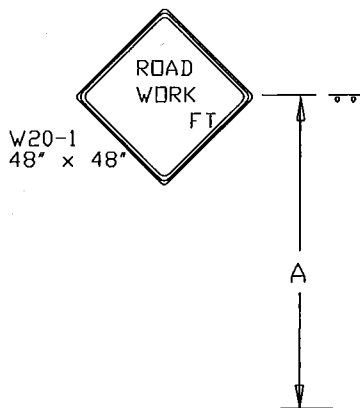
TRAFFIC DRUMS  
OR CONES

S<sup>1</sup>=30 FT.

S<sup>2</sup>=10 FT.

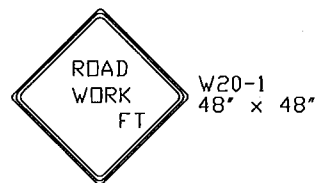
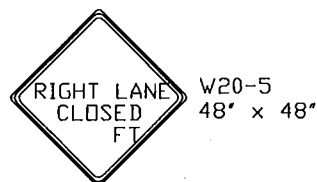
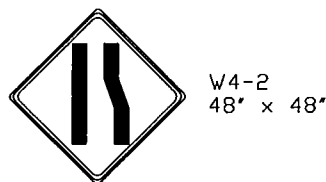
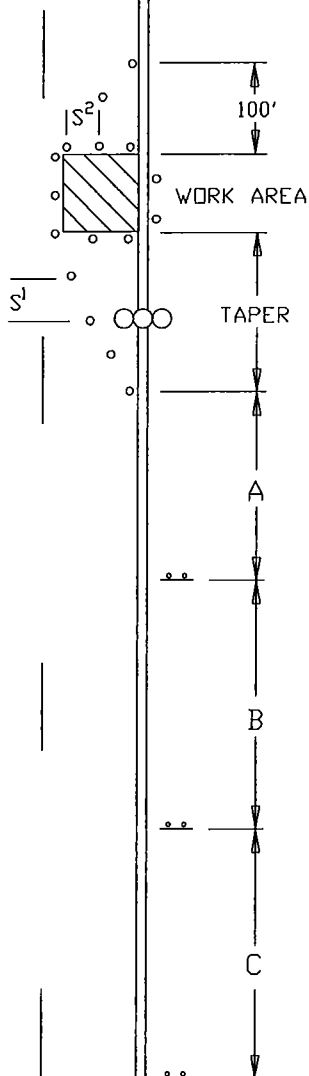
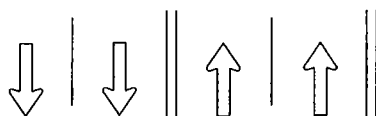
REVISION BY	DATE	APPROVED

DATE 07-01-16	TRAFFIC OPERATIONS SECTION MONTGOMERY COUNTY, MARYLAND
DES. BY MCDPWT	TRAFFIC CONTROL FOR RIGHT LANE CLOSURE (DIVIDED)
DRAWN BY TCLE	APPROVED
SCALE NTS	CHIEF, TRAFFIC OPERATIONS SECTION
	STANDARD TCP-103.01 OF SHEETS



NOTE: ACCESS POINTS WITHIN LANE CLOSURE SHALL BE CONTROLLED BY FLAGGER(S)

REFER TO TCP 100.01 FOR SIGN SPACING AND TAPER LENGTHS



← DIRECTION OF TRAFFIC

.. SIGN

▨ WORK SITE

○○ ARROW PANEL

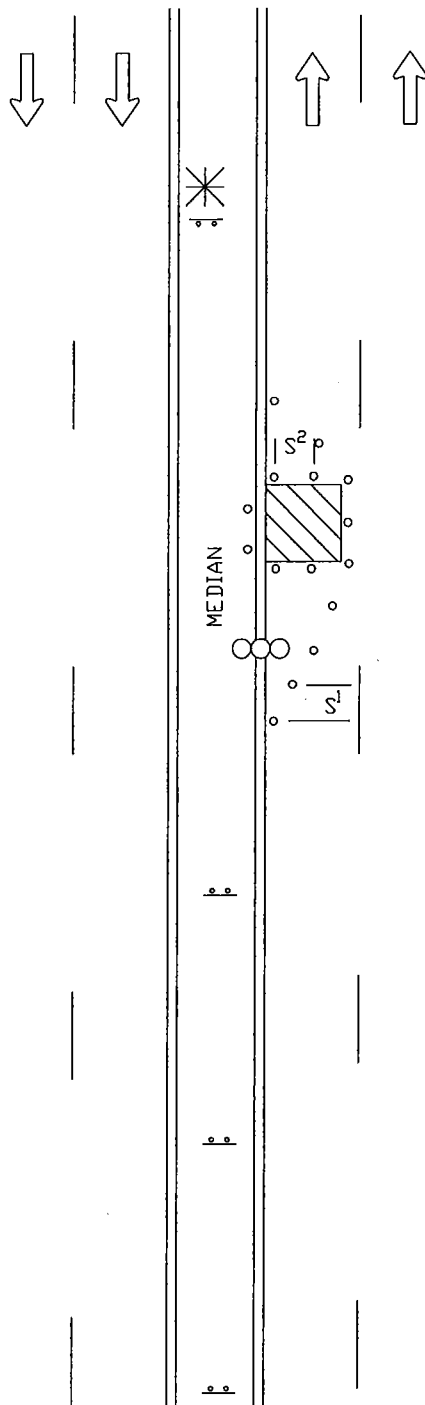
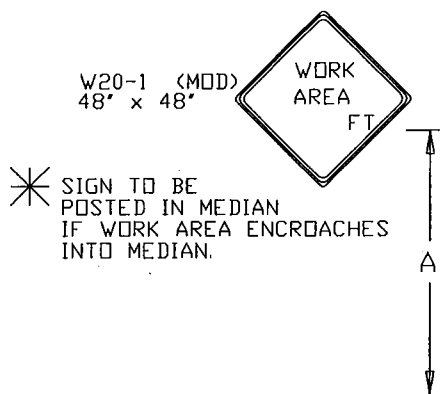
○ TRAFFIC DRUMS OR CONES

S<sup>1</sup>=30 FT.

S<sup>2</sup>=10 FT.

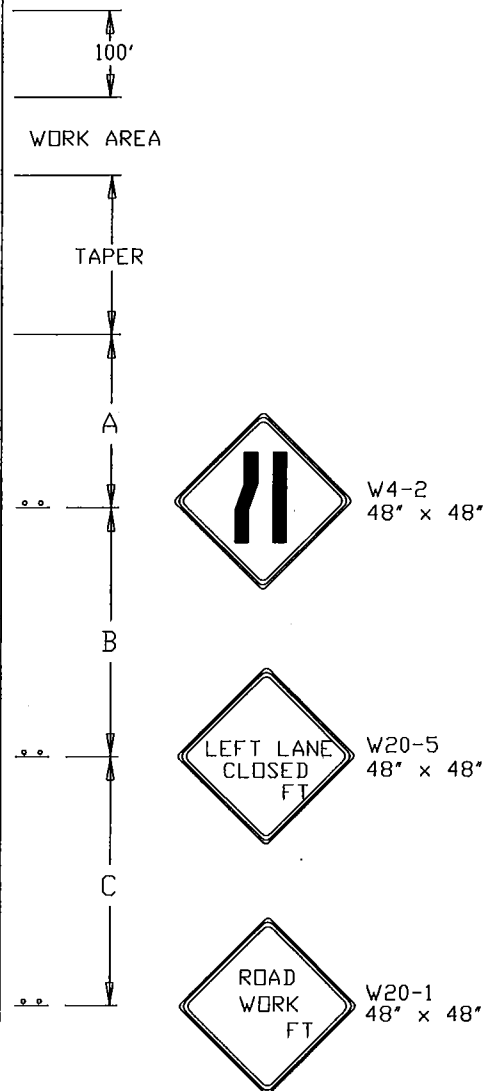
REVISION BY	DATE	APPROVED

DATE 07-01-16	TRAFFIC OPERATIONS SECTION MONTGOMERY COUNTY, MARYLAND
DES. BY MCDPWT	
DRAWN BY TCLE	TRAFFIC CONTROL FOR RIGHT LANE CLOSURE (UNDIVIDED)
SCALE NTS	APPROVED _____ CHIEF, TRAFFIC OPERATIONS SECTION
STANDARD TCP-103.02      OF SHEETS	



NOTE: ACCESS POINTS WITHIN LANE CLOSURE  
SHALL BE CONTROLLED BY FLAGGER(S)

REFER TO TCP 100.01 FOR SIGN  
SPACING AND TAPER LENGTHS



← DIRECTION OF TRAFFIC

.. SIGN

▨ WORK SITE

○○ ARROW PANEL

○ TRAFFIC DRUMS  
OR CONES

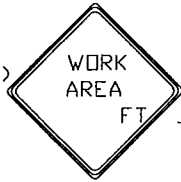
S<sup>1</sup>=30 FT.

S<sup>2</sup>=10 FT.

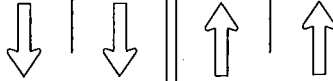
REVISION BY	DATE	APPROVED

DATE 07-01-16	TRAFFIC OPERATIONS SECTION MONTGOMERY COUNTY, MARYLAND
DES. BY MCDPWT	
DRAWN BY TCLE	TRAFFIC CONTROL FOR LEFT LANE CLOSURE (DIVIDED)
SCALE NTS	
	APPROVED
	CHIEF, TRAFFIC OPERATIONS SECTION
	STANDARD TCP-103.03      OF      SHEETS

W20-1 (MOD)  
48" x 48"



A



NOTE: ACCESS POINTS WITHIN LANE CLOSURE  
SHALL BE CONTROLLED BY FLAGGER(S)

REFER TO TCP 100.01 FOR SIGN  
SPACING AND TAPER LENGTHS

100'

WORK AREA

TAPER

A

B

C



W4-2  
48" x 48"



W20-5  
48" x 48"



W20-1  
48" x 48"

DY CL



DIRECTION OF TRAFFIC



SIGN



WORK SITE



ARROW PANEL



TRAFFIC DRUMS  
OR CONES

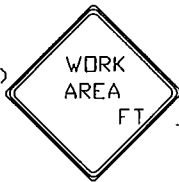
S<sup>1</sup>=30 FT.

S<sup>2</sup>=10 FT.

REVISION BY	DATE	APPROVED

DATE 07-01-16	TRAFFIC OPERATIONS SECTION MONTGOMERY COUNTY, MARYLAND
DES. BY MCDPWT	TRAFFIC CONTROL FOR LEFT LANE CLOSURE (UNDIVIDED)
DRAWN BY TCLE	
SCALE NTS	APPROVED  _____ CHIEF, TRAFFIC OPERATIONS SECTION  STANDARD TCP-103.04      ____ OF ____ SHEETS

W20-1 (MOD)  
48" x 48"



A



NOTE: ACCESS POINTS WITHIN LANE CLOSURE  
SHALL BE CONTROLLED BY FLAGGER(S)



W20-1 (MOD)  
48" x 48"

100'

A

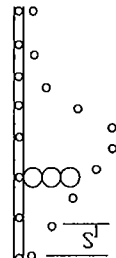
WORK AREA



W20-1 (MOD)  
48" x 48"

REFER TO TCP 100.01 FOR SIGN  
SPACING AND TAPER LENGTHS

A



S

DY CL

50'+/- LEFT TURN  
STORAGE MINIMUM

TAPER

A



W4-2  
48" x 48"

B



W20-5  
48" x 48"

C



W20-1  
48" x 48"



DIRECTION OF TRAFFIC



SIGN



WORK SITE



ARROW PANEL



TRAFFIC DRUMS  
OR CONES

S<sup>1</sup>=30 FT.

S<sup>2</sup>=10 FT.

REVISION BY	DATE	APPROVED

DATE 07-01-16	TRAFFIC OPERATIONS SECTION MONTGOMERY COUNTY, MARYLAND
DES. BY MCDPWT	
DRAWN BY TCLE	TRAFFIC CONTROL FOR LEFT LANE CLOSURE (INTERSECTION FAR SIDE)
SCALE NTS	APPROVED  _____ CHIEF, TRAFFIC OPERATIONS SECTION
STANDARD TCP-103.05      OF      SHEETS	

NOTE:  
WORK VEHICLES SHALL DISPLAY  
ROTATING AND /OR FLASHING LIGHT  
ATOP VEHICLES AND FLASHING  
WARNING LIGHTS IN FRONT AND REAR.

VEHICLES SHALL NOT PROCEED  
MORE THAN THREE (3) MILES AHEAD  
OF THE ADVANCE WARNING  
SIGNS.

VEHICLES SHOULD NOT OCCUPY OR BE  
STOPPED IN A LANE BEYOND A HORIZONTAL  
CURVE OR A VERTICAL CURVE (HILL).

IF STOPPING IS NECESSARY, FLAGGERS SHALL  
BE POSITIONED PRIOR TO STOPPING WORK  
VEHICLES.

THE FLAGGER SHALL BE POSITIONED IN  
ADVANCE OF THE CURVE (HORIZONTAL OR  
VERTICAL) TO PROVIDE MOTORIST ADEQUATE  
ADVANCE WARNING OF TEMPORARY WORK ZONE.

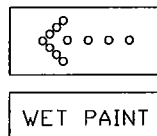
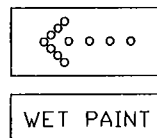
NO WORK OPERATIONS WHICH INTERFERES  
WITH THE FLOW OF TRAFFIC MAY TAKE PLACE  
DURING PEAK HOURS MONDAY - FRIDAY  
6 A.M. - 9 A.M. AND 3:30 P.M. - 7 P.M.

FOR PAVEMENT MARKING MATERIALS HAVING  
SLOW DRYING TIMES ADDITIONAL BACK-UP  
VEHICLES TO FOLLOW TRUCK MAY  
BE NECESSARY.

GRASS MEDIAN

GRASS MEDIAN

500' +/-



NOTE: WHEN SHADOW  
VEHICLE IS USED SIGN  
MAY BE MOUNTED  
ON ITS REAR



W20-1 (MOD)  
48' x 48'



W23-1  
OPTIONAL SIGN FOR  
SHORT DURATION



DIRECTION OF TRAFFIC



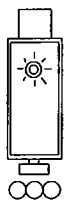
SIGN



FLASHING OR ROTATING LIGHT



ARROW PANEL



WORK VEHICLE

REVISION BY	DATE	APPROVED

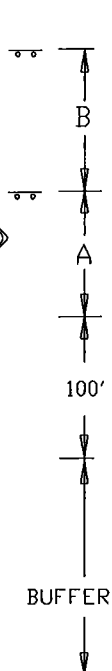
DATE 07-01-16	TRAFFIC OPERATIONS SECTION MONTGOMERY COUNTY, MARYLAND
DES. BY MCDPWT	
DRAWN BY TCLE	TRAFFIC CONTROL FOR MOVING MARKING OPERATION (2)
SCALE	APPROVED
NTS	CHIEF, TRAFFIC OPERATIONS SECTION
	STANDARD TCP-103.06 OF SHEETS



W20-1  
48" x 48"



W9-3  
48" x 48"



WORK AREA

NOTE: ACCESS POINTS WITHIN LANE CLOSURE  
SHALL BE CONTROLLED BY FLAGGER(S)

REFER TO TCP 100.01 FOR SIGN  
SPACING AND TAPER LENGTHS

NOTE: ARROW DISPLAY PANEL  
TO BE SET ON CAUTION MODE.

WORK AREA

BUFFER

100'

A

..



W9-3  
48" x 48"

B

..



W20-1  
48" x 48"

← DIRECTION OF TRAFFIC

.. SIGN

▨ WORK SITE

○○ ARROW PANEL

○ TRAFFIC DRUMS  
OR CONES

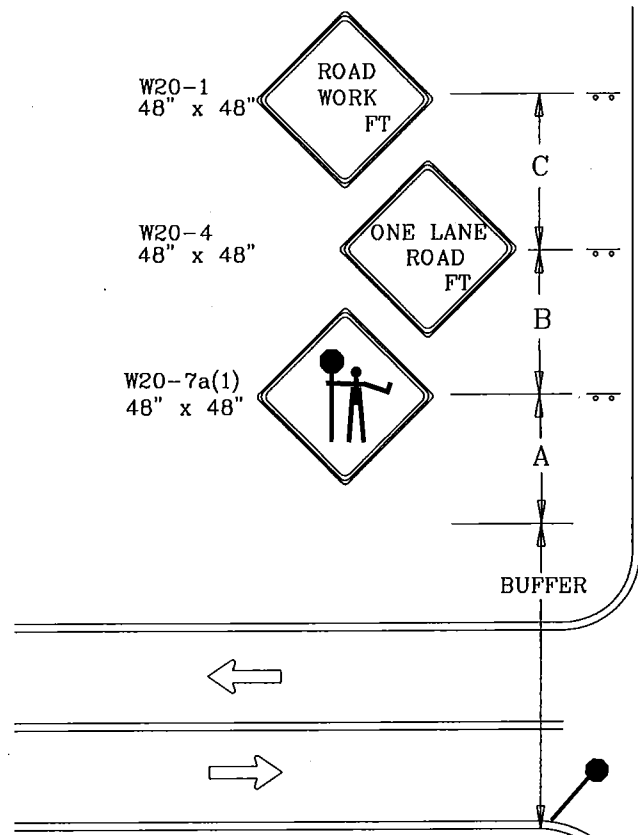
S<sup>1</sup>=30 FT.

S<sup>2</sup>=10 FT.

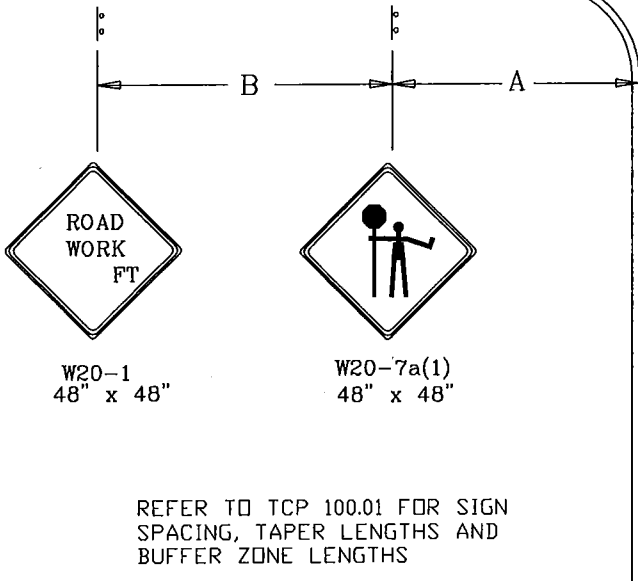
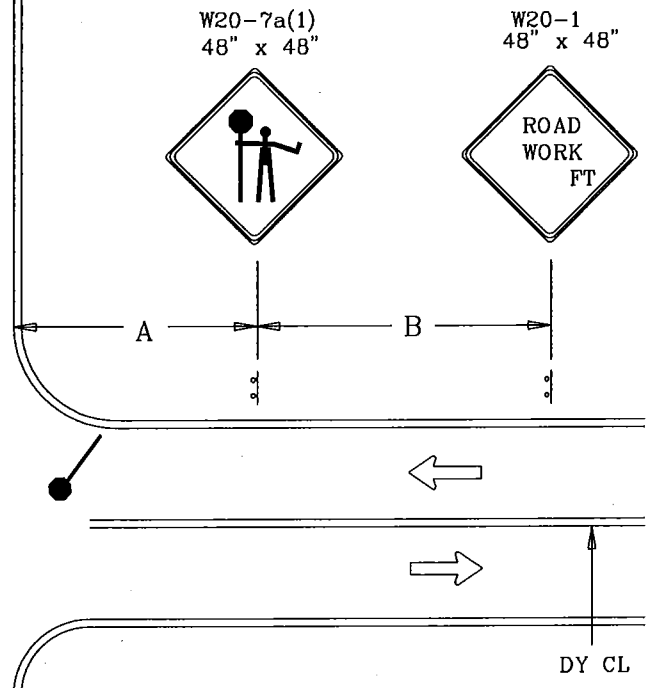
REVISION BY	DATE	APPROVED

DATE 07-01-16	TRAFFIC OPERATIONS SECTION MONTGOMERY COUNTY, MARYLAND
DES. BY MCDPWT	
DRAWN BY TCLE	TRAFFIC CONTROL FOR TWO-WAY LEFT TURN LANE CLOSURE
SCALE NTS	
APPROVED	_____ CHIEF, TRAFFIC OPERATIONS SECTION
STANDARD TCP-104.01	
____ OF ____ SHEETS	





NOTE: ACCESS POINTS WITHIN LANE CLOSURE SHALL BE CONTROLLED BY FLAGGER(S)



REFER TO TCP 100.01 FOR SIGN SPACING, TAPER LENGTHS AND BUFFER ZONE LENGTHS

← DIRECTION OF TRAFFIC

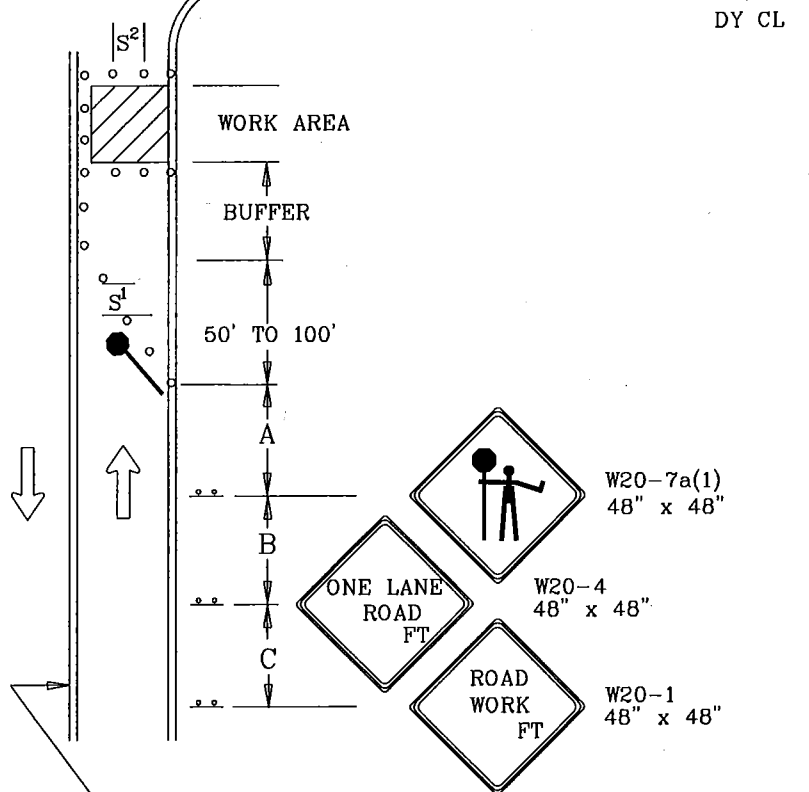
.. SIGN

▨ WORK SITE

● FLAGGER

○ TRAFFIC DRUMS OR CONES

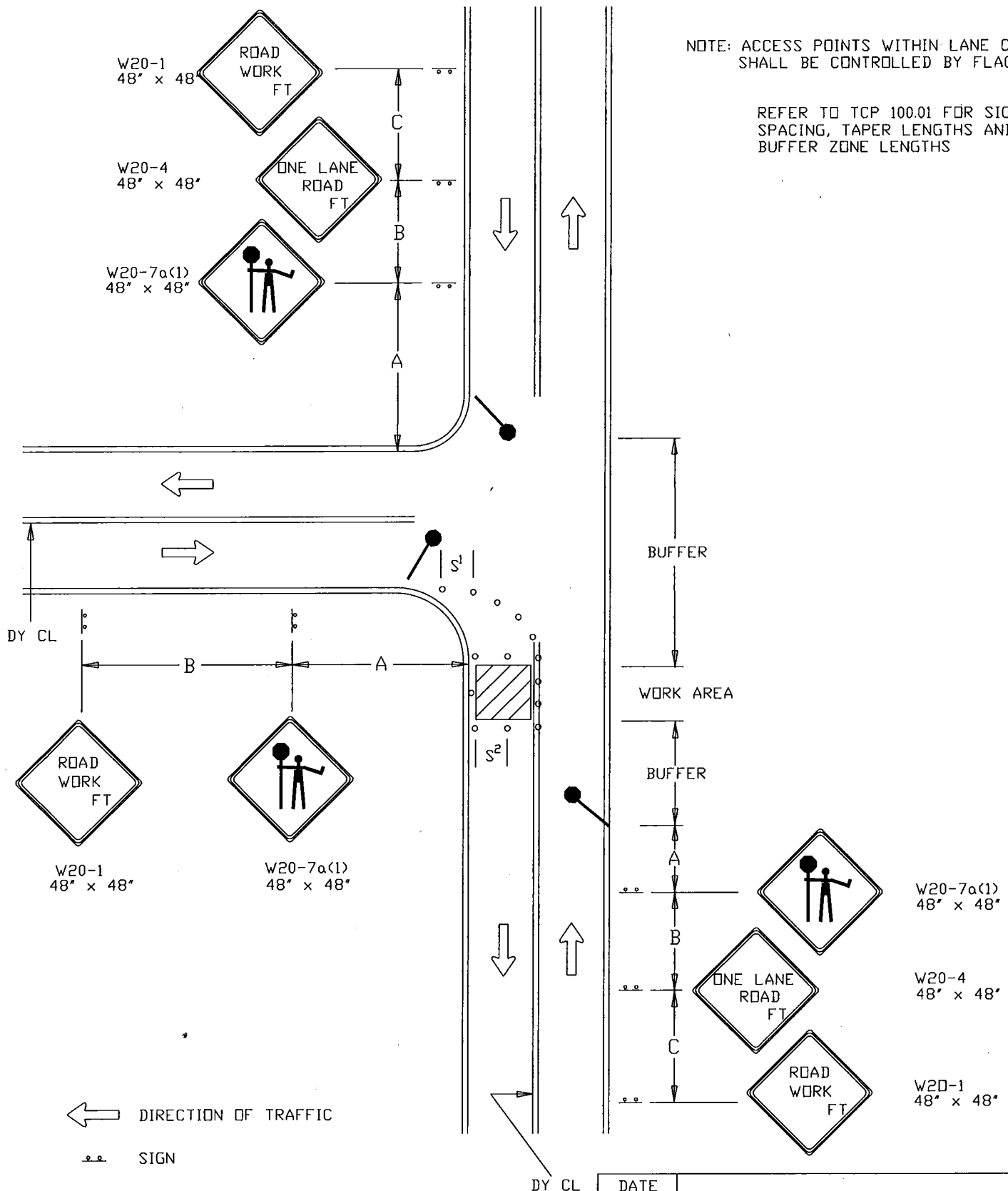
S<sup>1</sup> = 30 FT.  
S<sup>2</sup> = 10 FT.



			DATE	TRAFFIC OPERATIONS SECTION	
			07-01-16	MONTGOMERY COUNTY, MARYLAND	
			DES. BY	FLAGGING CONTROL	
			MCDPWT	AT 4 - LEG INTERSECTION (2)	
			DRAWN BY	APPROVED	
			TCLE		
			SCALE	CHIEF, TRAFFIC OPERATIONS SECTION	
			NTS	STANDARD TCP-105.02	
				OF SHEETS	

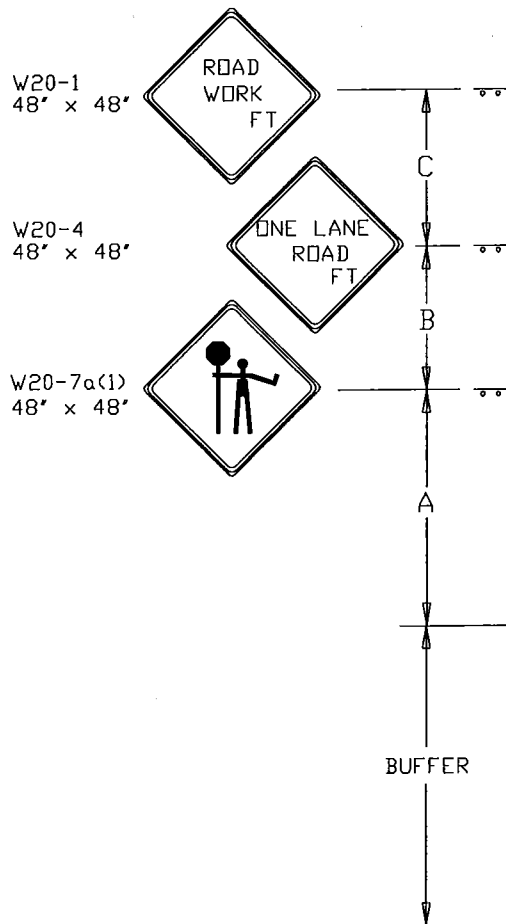
NOTE: ACCESS POINTS WITHIN LANE CLOSURE SHALL BE CONTROLLED BY FLAGGER(S)

REFER TO TCP 100.01 FOR SIGN SPACING, TAPER LENGTHS AND BUFFER ZONE LENGTHS



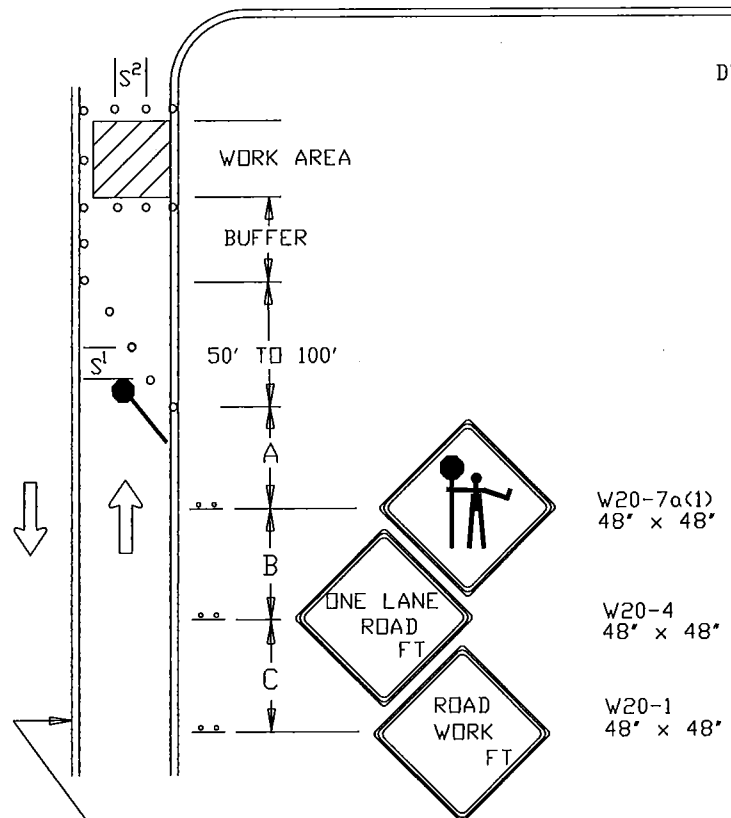
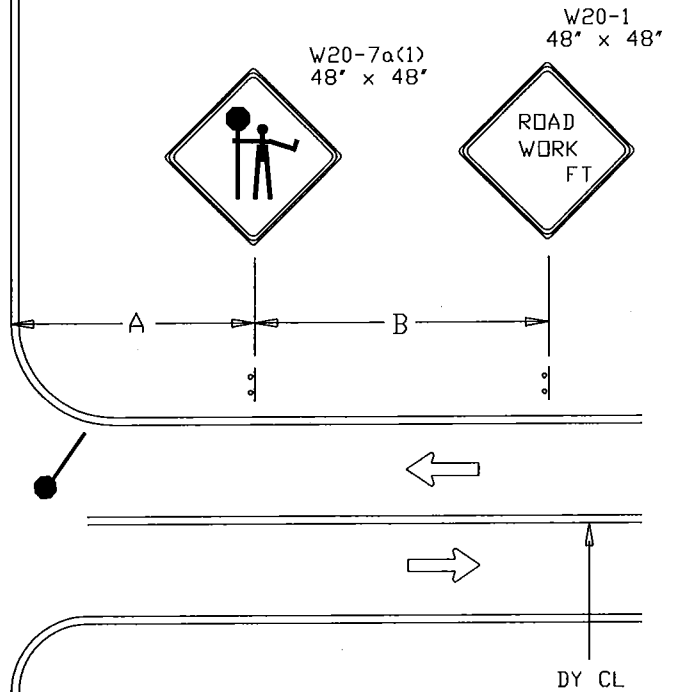
DATE	07-01-16		
DES. BY	MCDPWT		
DRAWN BY	TCLE		
SCALE	NTS		
TRAFFIC OPERATIONS SECTION MONTGOMERY COUNTY, MARYLAND			
FLAGGING CONTROL AT 3 - LEG INTERSECTION (1)			
APPROVED CHIEF, TRAFFIC OPERATIONS SECTION			
STANDARD TCP-105.03      OF SHEETS			

REVISION BY	DATE	APPROVED



NOTE: ACCESS POINTS WITHIN LANE CLOSURE SHALL BE CONTROLLED BY FLAGGER(S)

REFER TO TCP 100.01 FOR SIGN SPACING, TAPER LENGTHS AND BUFFER ZONE LENGTHS



← DIRECTION OF TRAFFIC

—•— SIGN

▨ WORK SITE

● FLAGGER

○ TRAFFIC DRUMS OR CONES

S<sup>1</sup>=30 FT.

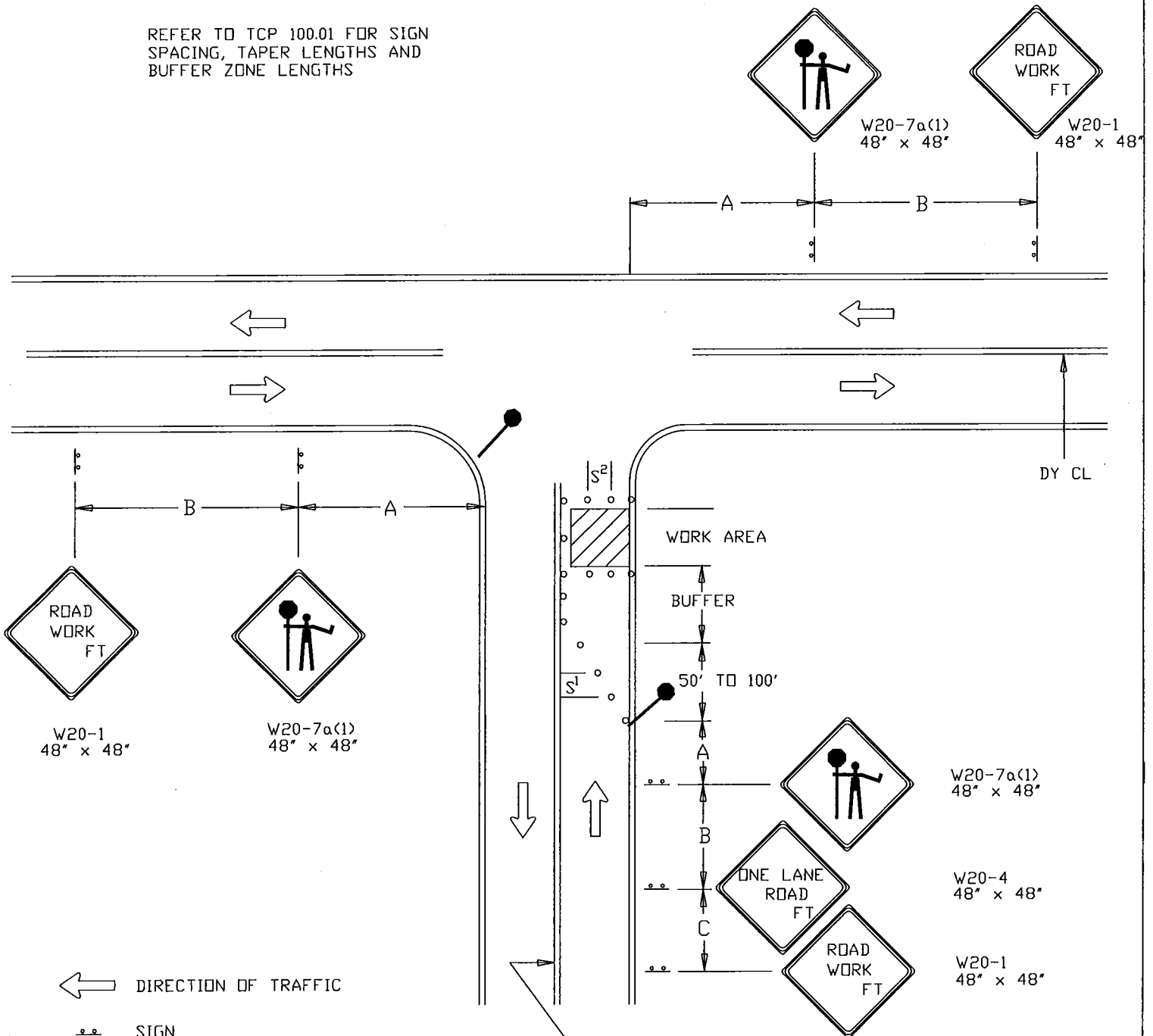
S<sup>2</sup>=10 FT.

REVISION BY	DATE	APPROVED

DATE	07-01-16
DES. BY	MCDPWT
DRAWN BY	TCLE
SCALE	NTS
TRAFFIC OPERATIONS SECTION. MONTGOMERY COUNTY, MARYLAND	
FLAGGING CONTROL AT 3 - LEG INTERSECTION (2)	
APPROVED	
CHIEF, TRAFFIC OPERATIONS SECTION	
STANDARD TCP-105.04 — OF — SHEETS	

NOTE: ACCESS POINTS WITHIN LANE CLOSURE  
SHALL BE CONTROLLED BY FLAGGER(S)

REFER TO TCP 100.01 FOR SIGN  
SPACING, TAPER LENGTHS AND  
BUFFER ZONE LENGTHS



← DIRECTION OF TRAFFIC

—●— SIGN

▨ WORK SITE

● FLAGGER

○ TRAFFIC DRUMS  
OR CONES

S<sup>1</sup>=30 FT.

S<sup>2</sup>=10 FT.

REVISION BY	DATE	APPROVED

DATE 07-01-16	TRAFFIC OPERATIONS SECTION MONTGOMERY COUNTY, MARYLAND
DES. BY MCDPWT	
DRAWN BY TCLE	FLAGGING CONTROL AT 3 - LEG INTERSECTION (3)
SCALE NTS	APPROVED _____ CHIEF, TRAFFIC OPERATIONS SECTION
	STANDARD TCP-105.05      OF      SHEETS



W20-1  
48" x 48"

W20-4  
48" x 48"

W20-7a(1)  
48" x 48"

ROAD  
WORK  
FT

ONE LANE  
ROAD  
FT



BUFFER

NOTE: ACCESS POINTS WITHIN LANE CLOSURE  
SHALL BE CONTROLLED BY FLAGGER(S)

REFER TO TCP 100.01 FOR SIGN  
SPACING, TAPER LENGTHS AND  
BUFFER LENGTHS

50' TO 100'

WORK AREA

BUFFER

50' TO 100'

DY CL



W20-1  
48" x 48"

W20-7a(1)  
48" x 48"



W20-7a(1)  
48" x 48"

W20-4  
48" x 48"

W20-1  
48" x 48"



ROAD  
WORK  
FT



DIRECTION OF TRAFFIC



SIGN



WORK SITE



FLAGGER

TRAFFIC DRUMS  
OR CONES

S<sup>1</sup>=30 FT.

S<sup>2</sup>=10 FT.

DY CL

DATE  
07-01-16

DES. BY

DRAWN BY

TCLE

SCALE

NTS

TRAFFIC OPERATIONS SECTION  
MONTGOMERY COUNTY, MARYLAND

FLAGGING CONTROL AT  
3 - LEG INTERSECTION  
FAR - SIDE CLOSURE

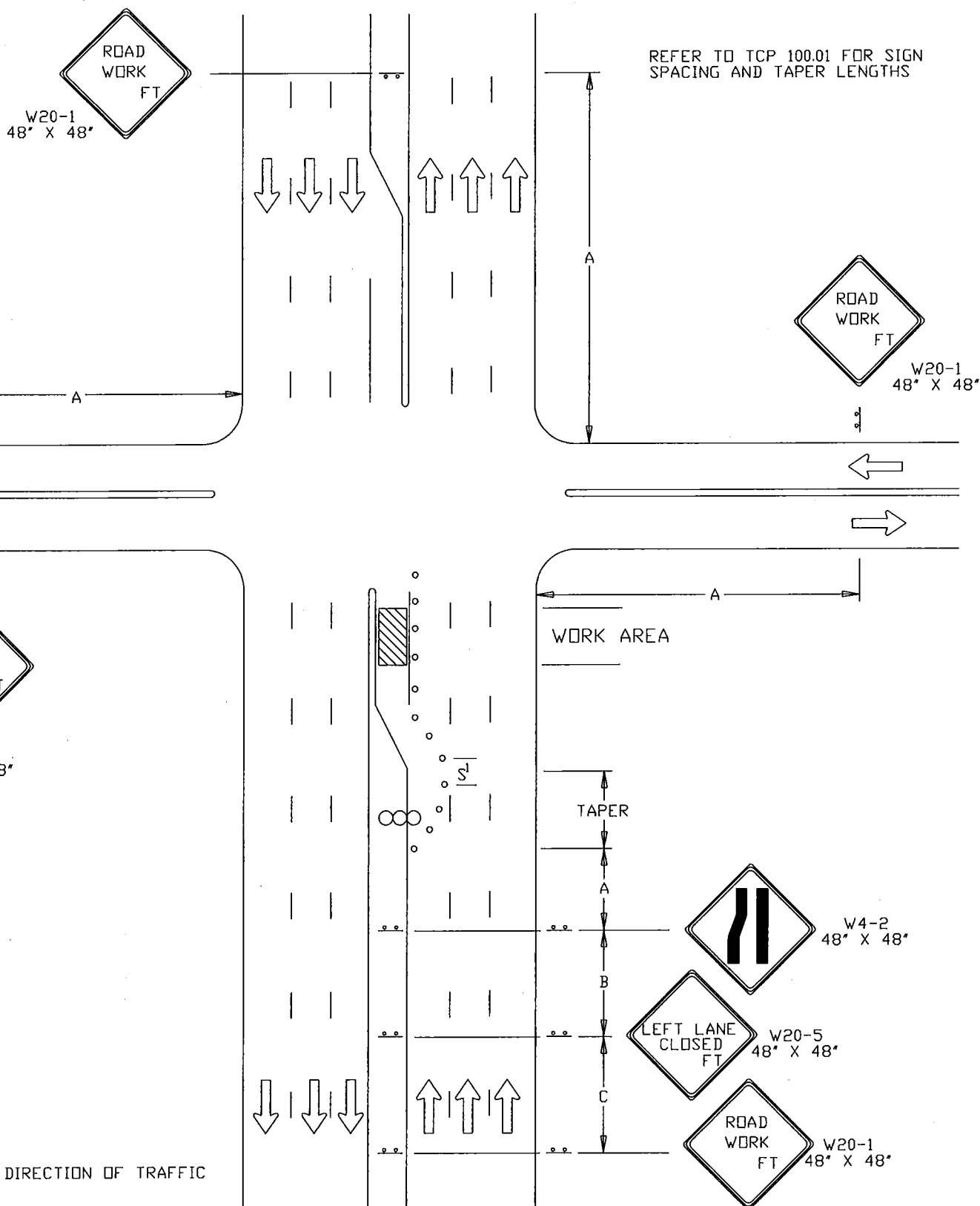
APPROVED

CHIEF, TRAFFIC OPERATIONS SECTION

STANDARD TCP-105.07 OF SHEETS

REVISION BY	DATE	APPROVED





W20-1  
48" X 48"



REFER TO TCP 100.01 FOR SIGN  
SPACING AND TAPER LENGTHS

W20-1  
48" X 48"



W20-1  
48" X 48"

WORK AREA



W20-5 (MOD)  
48" X 48"



W20-1  
48" X 48"



DIRECTION OF TRAFFIC



SIGN



WORK SITE



ARROW PANEL



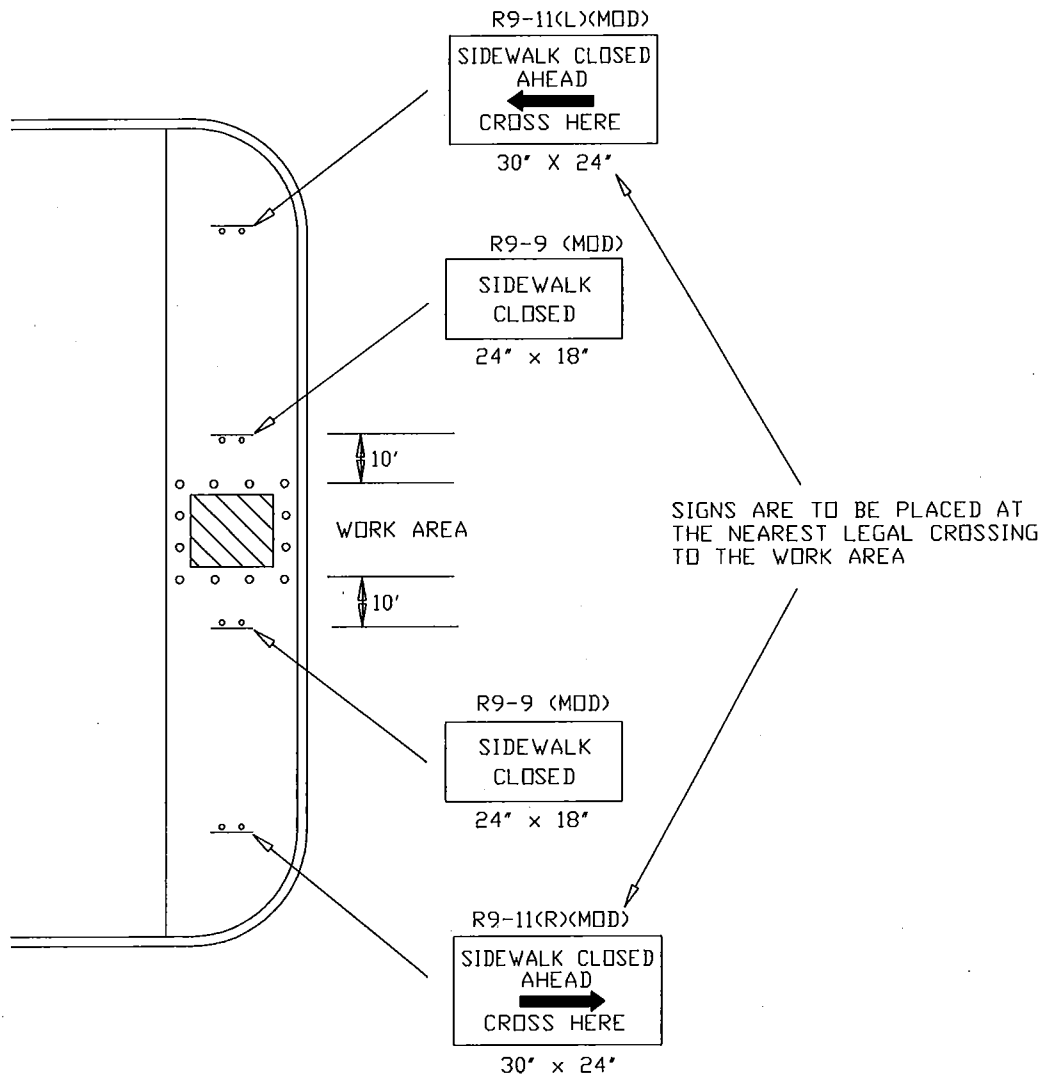
TRAFFIC DRUMS  
OR CONES

$S^1 = 30$  FT

$S^2 = 10$  FT

REVISION BY	DATE	APPROVED

DATE 07-01-16	TRAFFIC OPERATIONS SECTION MONTGOMERY COUNTY, MARYLAND
DES. BY MCDPWT	
DRAWN BY TCLE	TRAFFIC CONTROL FOR RIGHT TURN LANE CLOSURE
SCALE NTS	APPROVED _____ CHIEF, TRAFFIC OPERATIONS SECTION
	STANDARD TCP-106.02      OF      SHEETS



—•— SIGN

▨ WORK SITE

○ TRAFFIC DRUMS  
OR CONES

REVISION BY	DATE	APPROVED

DATE 07-01-16	TRAFFIC OPERATIONS SECTION MONTGOMERY COUNTY, MARYLAND
DES. BY MCDPWT	
DRAWN BY TCLE	PEDESTRIAN CONTROL FOR TEMPORARY SIDEWALK CLOSURE
SCALE NTS	APPROVED _____ CHIEF, TRAFFIC OPERATIONS SECTION
STANDARD TCP-107.01      — OF — SHEETS	

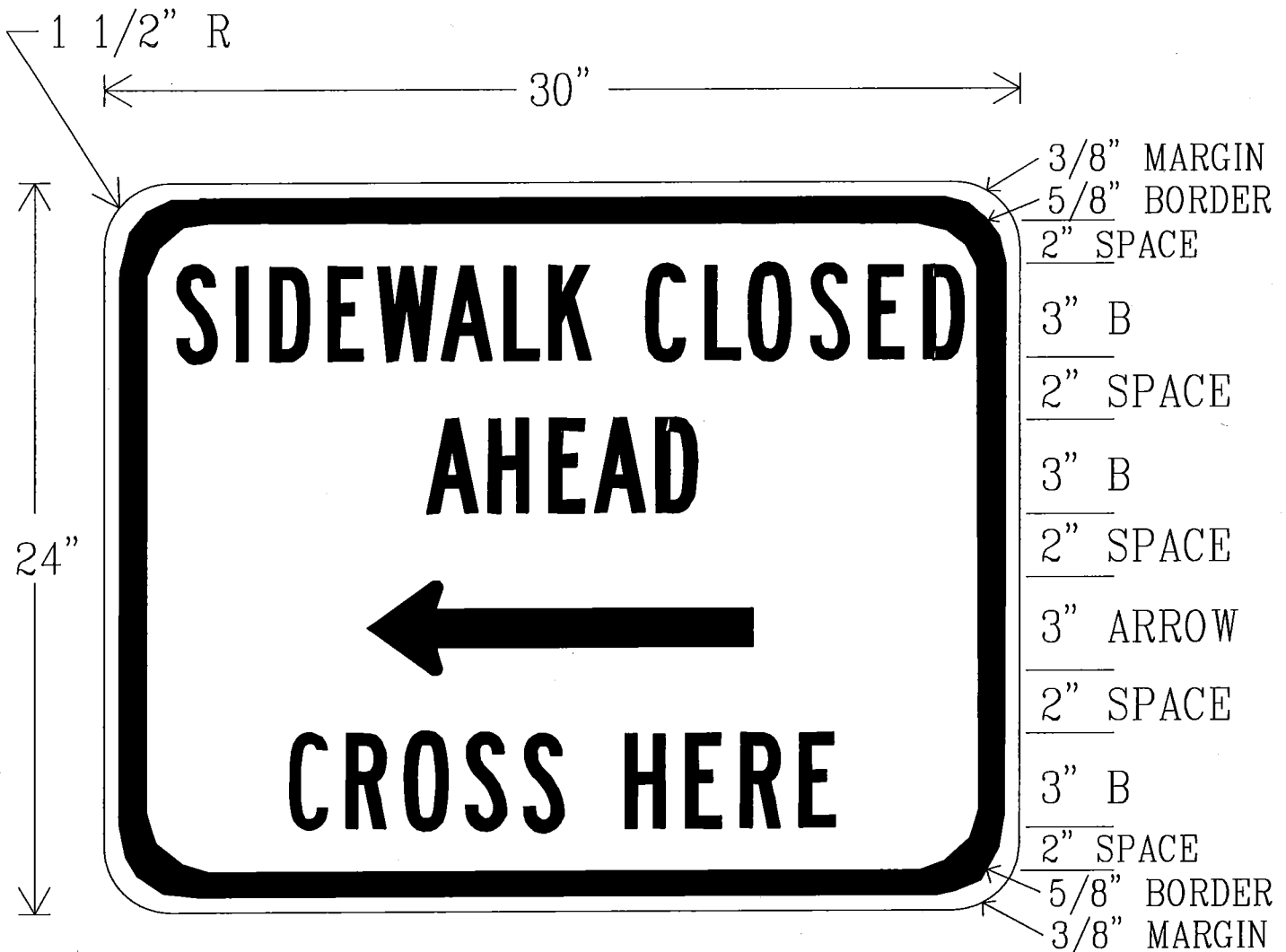
R9-9 (MOD)



BLACK LEGEND AND BORDER  
ON WHITE BACKGROUND

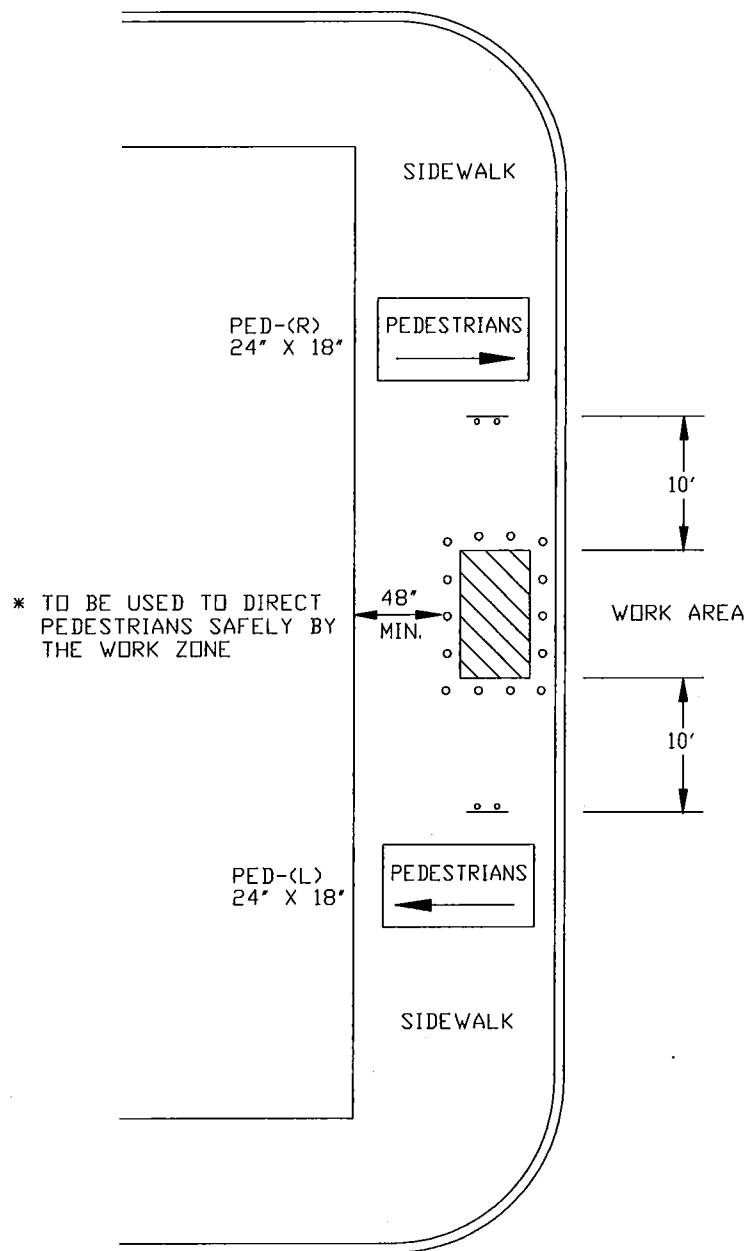
			DATE 07-01-16	TRAFFIC OPERATIONS SECTION MONTGOMERY COUNTY, MARYLAND
			DES. BY MCDPWT	
REVISION BY	DATE	APPROVED	DRAWN BY TCLE	SIGN DETAIL FOR TEMPORARY SIDEWALK CLOSURE
			SCALE NTS	APPROVED _____ CHIEF, TRAFFIC OPERATIONS SECTION
			STANDARD TCP-107.01.01 ____ OF ____ SHEETS	

R9-11(L)(MOD)



BLACK LEGEND AND BORDER  
ON WHITE BACKGROUND

			DATE 07-01-16	TRAFFIC OPERATIONS SECTION MONTGOMERY COUNTY, MARYLAND
			DES. BY	
REVISION BY	DATE	APPROVED	MCDPWT	SIGN DETAIL FOR TEMPORARY SIDEWALK CLOSURE
			DRAWN BY TCLE	
			SCALE	APPROVED
			NTS	CHIEF, TRAFFIC OPERATIONS SECTION
				STANDARD TCP-107.01.02 OF SHEETS



.. SIGN

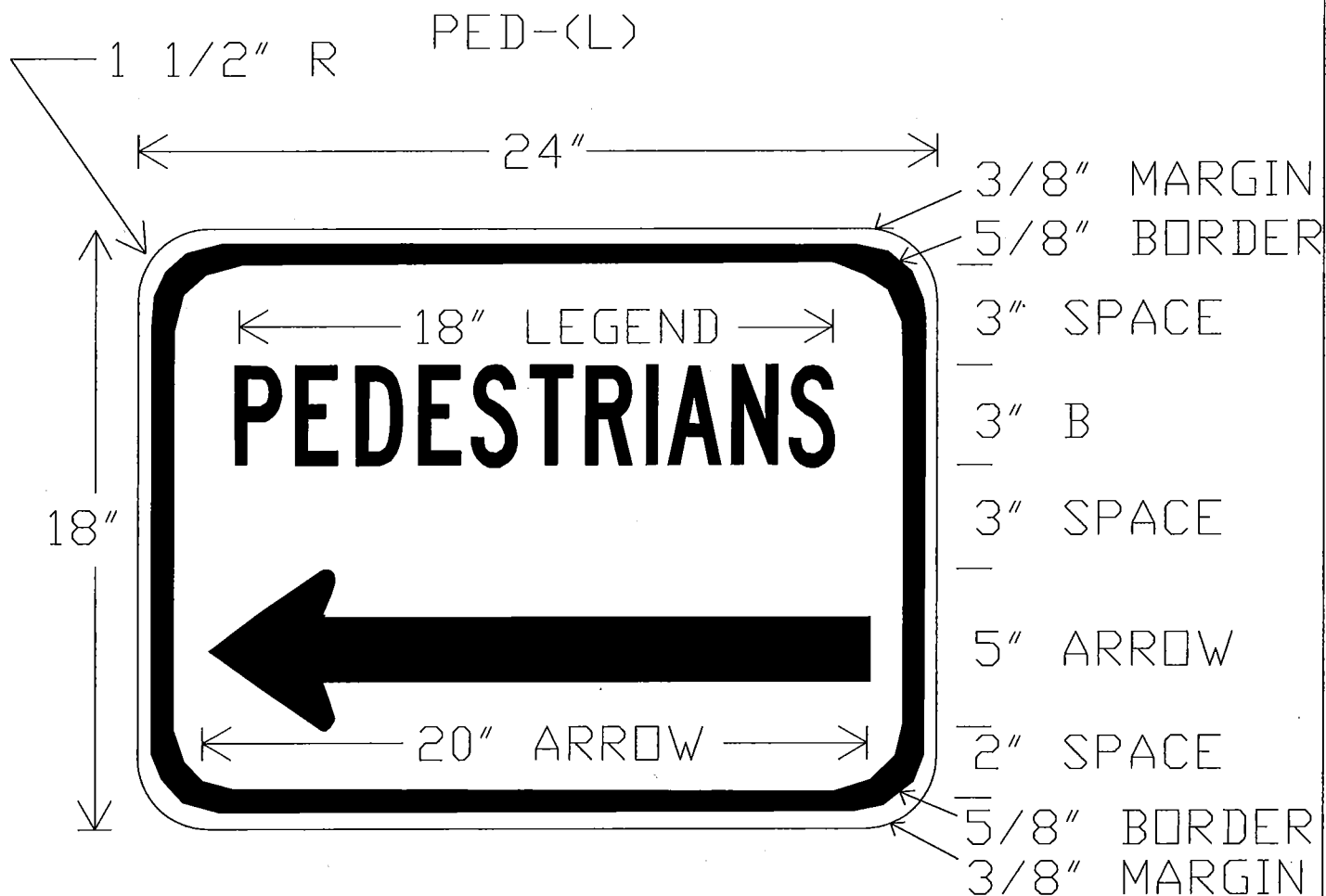


WORK SITE

o TRAFFIC DRUMS  
OR CONES

REVISION BY	DATE	APPROVED

DATE 07-01-16	TRAFFIC OPERATIONS SECTION MONTGOMERY COUNTY, MARYLAND
DES. BY MCDPWT	
DRAWN BY TCLE	PEDESTRIAN CONTROL FOR SIDEWALK BY-PASS
SCALE NTS	APPROVED _____ CHIEF, TRAFFIC OPERATIONS SECTION
	STANDARD TCP-107.02 ____ OF ____ SHEETS



BLACK LEGEND AND BORDER  
ON WHITE BACKGROUND

			DATE 07-01-16	TRAFFIC OPERATIONS SECTION MONTGOMERY COUNTY, MARYLAND	
			DES. BY MCDPWT	SIGN DETAIL FOR PEDESTRIAN SIDEWALK BY-PASS	
REVISION BY	DATE	APPROVED	DRAWN BY TCLE	APPROVED	
			SCALE	CHIEF, TRAFFIC OPERATIONS SECTION	
			NTS	STANDARD TCP-107.02.01	
				OF SHEETS	

CONTRACTOR MUST PROVIDE SHOP  
DRAWING DETAIL OF COVERED WALKWAY  
FOR REVIEW AND APPROVAL TO THE  
TRAFFIC OPERATIONS SECTION, IF  
ALTERNATE MATERIALS FOR WALKWAY  
ARE PROPOSED

1/2" MIN. THICK PLYWOOD  
2" THICK ROOF DECK

2" X 8" FULL LENGTH  
ONE ON EACH SIDE

SLOPE DOWN TOWARDS CURBLINE  
ROLLED ROOFING

2" X 8" ON 4' O/C

WIRE MESH OR  
1/2" PLYWOOD

2" X 4" TYP.  
EACH STUD

40 WATT LIGHT  
W/ GUARD  
ON 16 FT O/C

BACK SIDE  
(WORK AREA)

FRONT SIDE  
(ROAD SIDE)

6" LAP

4" X 4" ON 2' O/C

1/2" PLYWOOD  
6' 0" HIGH MIN.

2" X 4"  
HANDRAIL

8' CLEAR

WIRE MESH, CONTINUOUS

3'6"

5/8" PLYWOOD  
FLOOR

5 FT MIN.

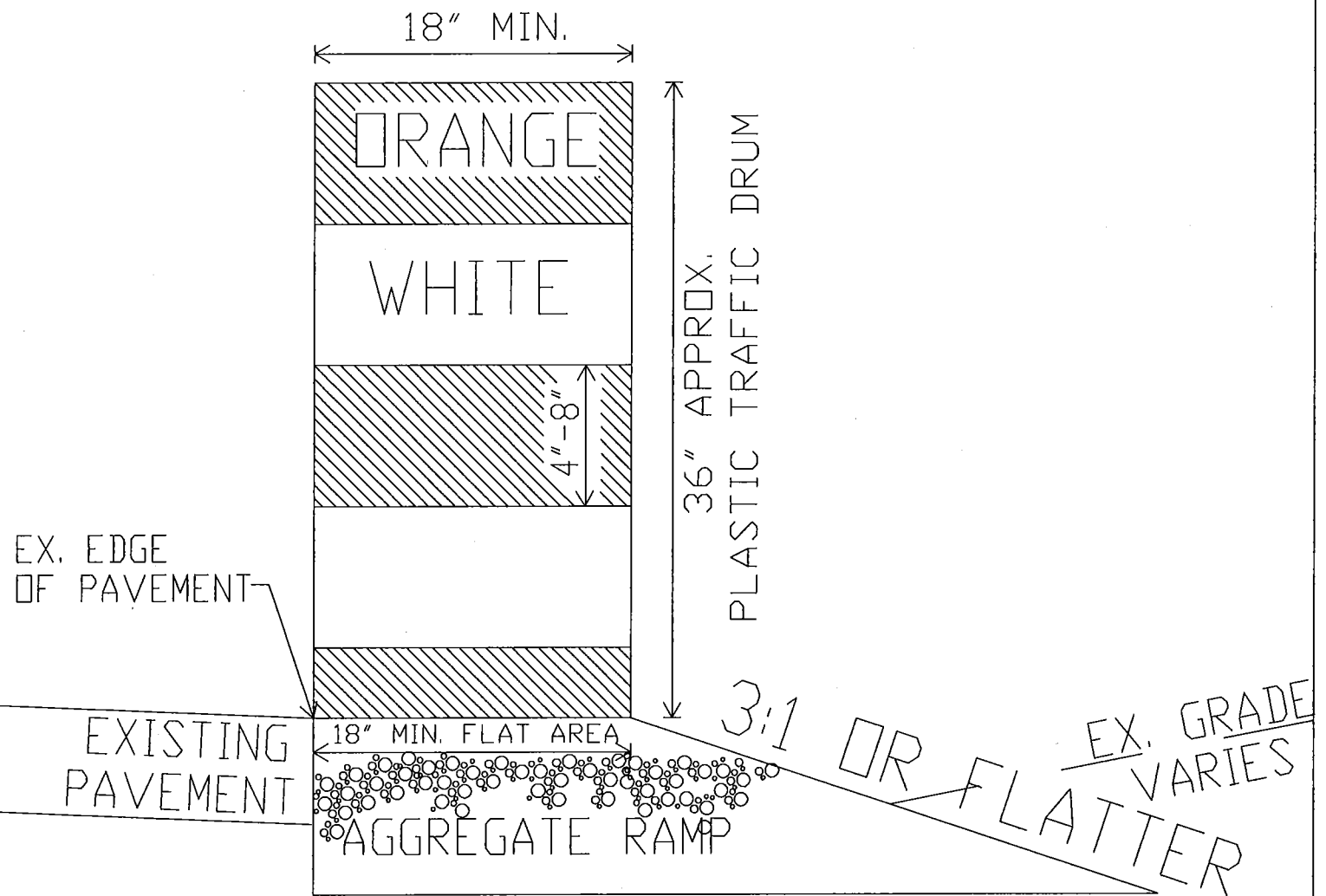
4" X 4" ON 2' O/C

PROVIDE TEMPORARY ASPHALT WEDGE  
FROM CURB TO EXISTING  
PAVING AS NECESSARY

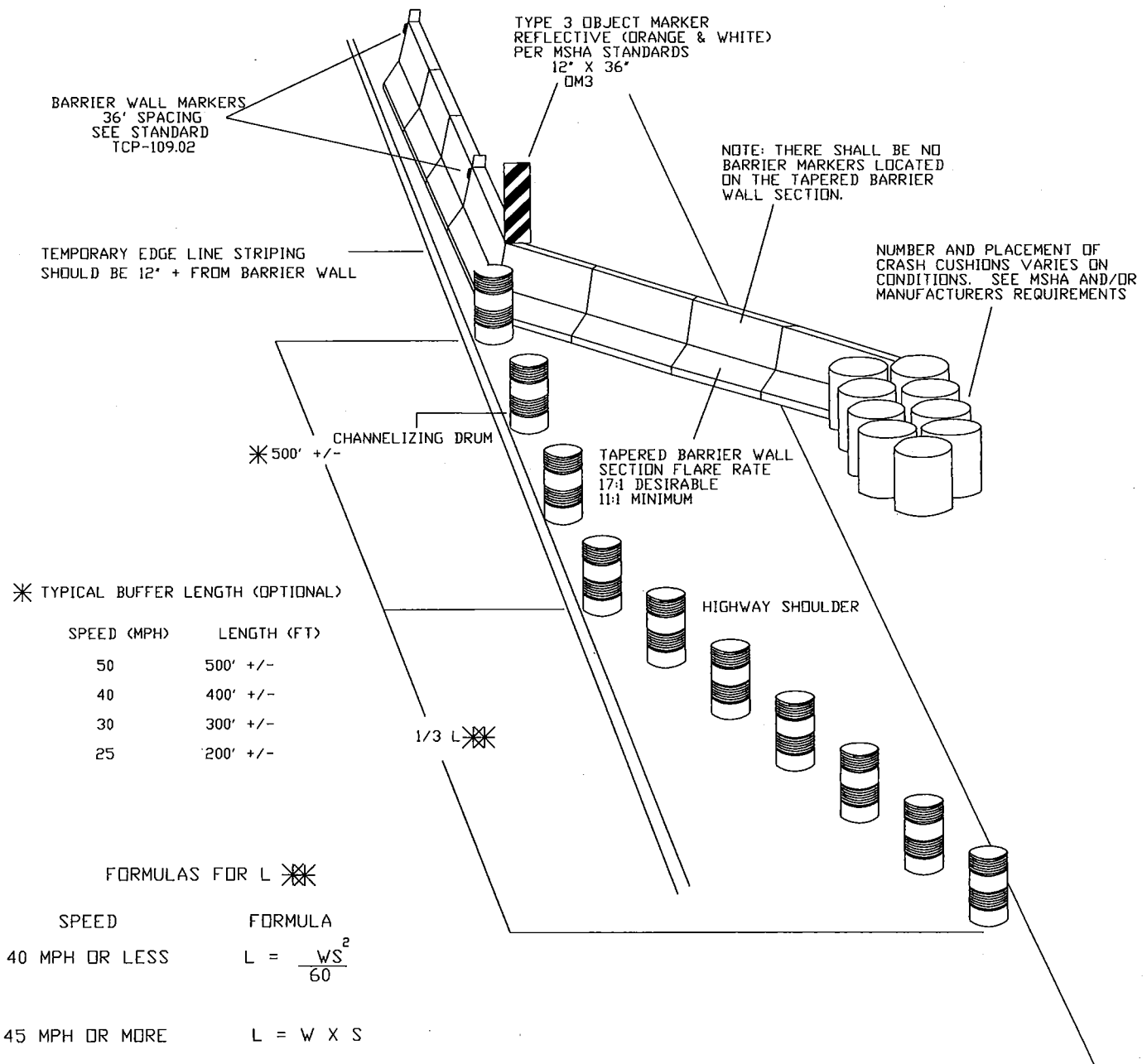
DATE	07-01-16		TRAFFIC OPERATIONS SECTION, MONTGOMERY COUNTY, MARYLAND
DES. BY	MCDPWT		
REVISION BY	DATE	APPROVED	COVERED WALKWAY
			APPROVED
			CHIEF, TRAFFIC OPERATIONS SECTION
			STANDARD TCP-107.03   OF SHEETS

REVISION BY	DATE	APPROVED





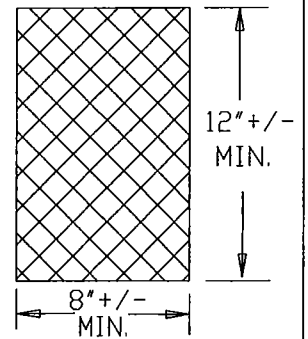
			DATE 07-01-16	TRAFFIC OPERATIONS SECTION MONTGOMERY COUNTY, MARYLAND
			DES. BY MCDPWT	
REVISION BY	DATE	APPROVED	DRAWN BY TCLE	TEMPORARY AGGREGATE RAMP DETAIL FOR NON-WORKING HOURS
			SCALE NTS	
				APPROVED _____ CHIEF, TRAFFIC OPERATIONS SECTION
				STANDARD TCP-108.01 — OF — SHEETS



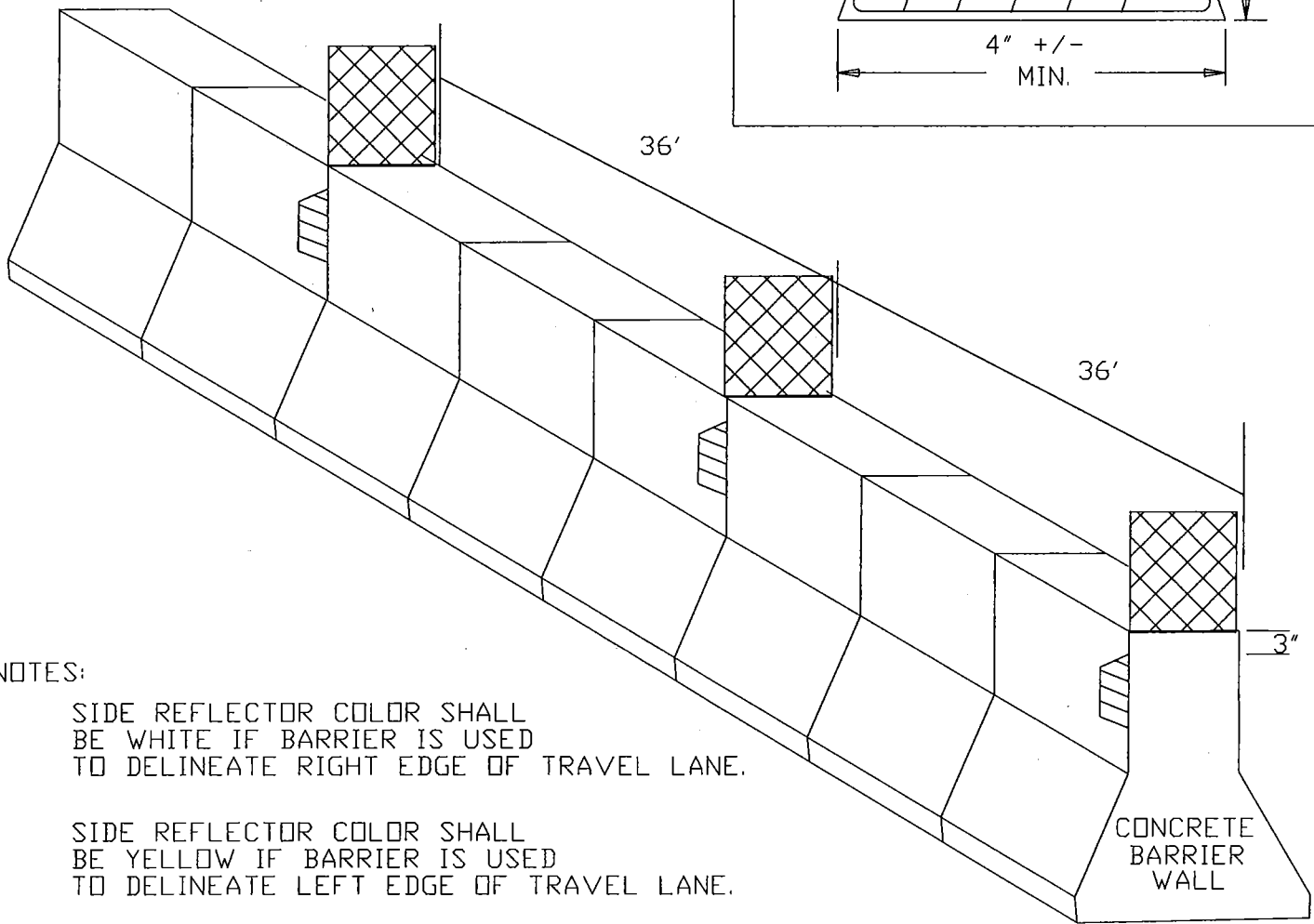
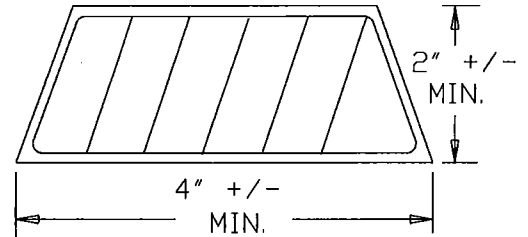
L = TAPER LENGTH IN FEET  
W = WIDTH OF OFFSET IN FEET  
S = POSTED SPEED, OFF-PEAK  
85TH PERCENTILE SPEED PRIOR  
TO WORK STARTING, OR THE  
ANTICIPATED OPERATING SPEED  
IN MPH.

			DATE 07-01-16	TRAFFIC OPERATIONS SECTION MONTGOMERY COUNTY, MARYLAND	
			DES. BY MCDPWT	ADVANCE CHANNELIZATION AND PROTECTION FOR BARRIER FLARE SECTIONS	
			DRAWN BY TCLE	APPROVED	
			SCALE NTS	CHIEF, TRAFFIC OPERATIONS SECTION	
				STANDARD TCP-109.01	
				— OF — SHEETS	

TOP BARRIER WALL  
MARKER DETAIL



SIDE BARRIER WALL MARKER DETAIL



NOTES:

SIDE REFLECTOR COLOR SHALL  
BE WHITE IF BARRIER IS USED  
TO DELINEATE RIGHT EDGE OF TRAVEL LANE.

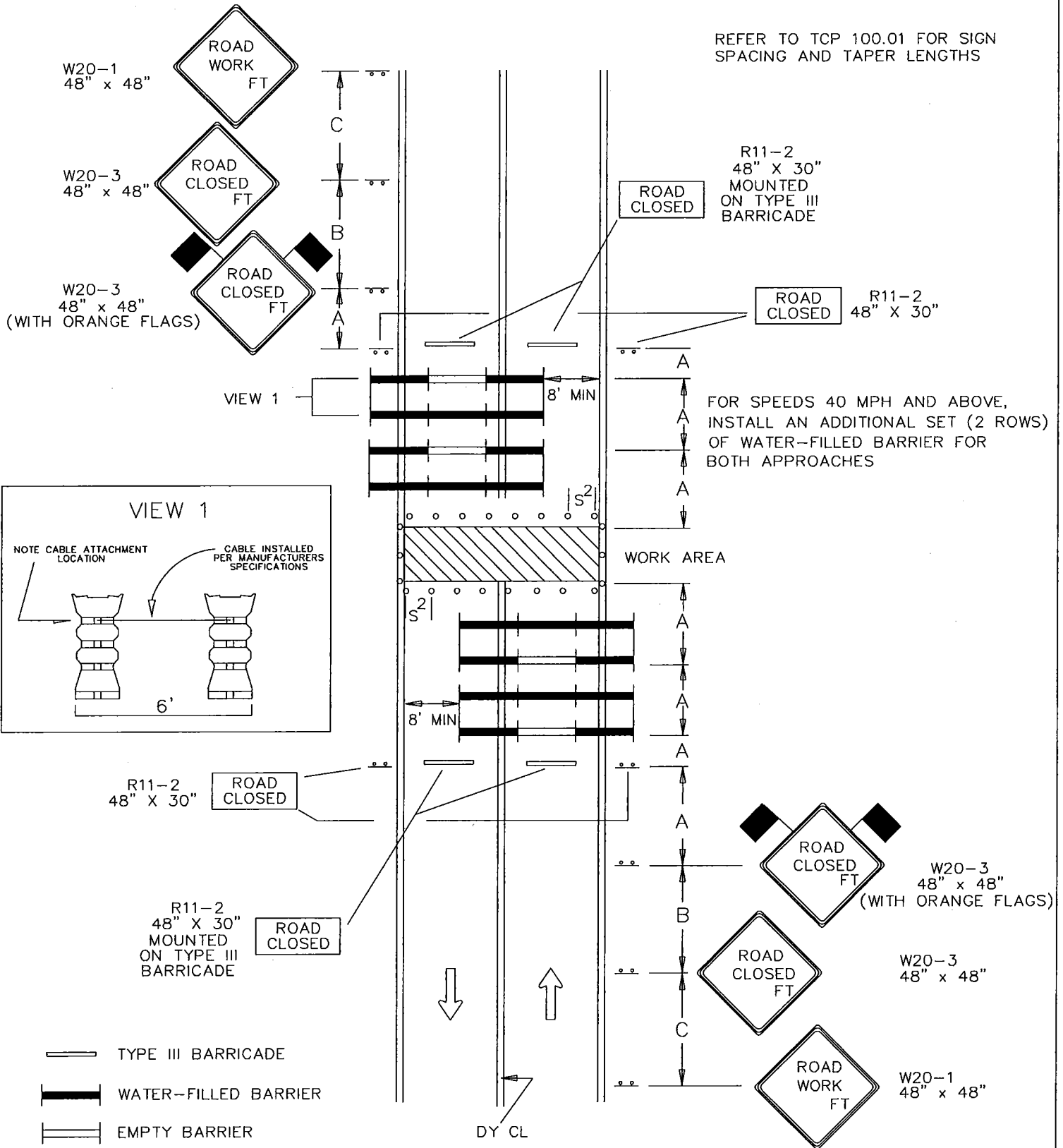
SIDE REFLECTOR COLOR SHALL  
BE YELLOW IF BARRIER IS USED  
TO DELINEATE LEFT EDGE OF TRAVEL LANE.

TOP REFLECTOR COLOR SHALL  
BE FLOURESENT ORANGE REGARDLESS  
OF EDGE OF TRAVEL LANE

REVISION BY	DATE	APPROVED

DATE 07-01-16	TRAFFIC OPERATIONS SECTION MONTGOMERY COUNTY, MARYLAND
DES. BY MCDPWT	
DRAWN BY TCLE	REFLECTORIZED MARKERS PLACEMENT DETAIL
SCALE NTS	
	APPROVED
	CHIEF, TRAFFIC OPERATIONS SECTION
	STANDARD TCP-109.02 — OF — SHEETS

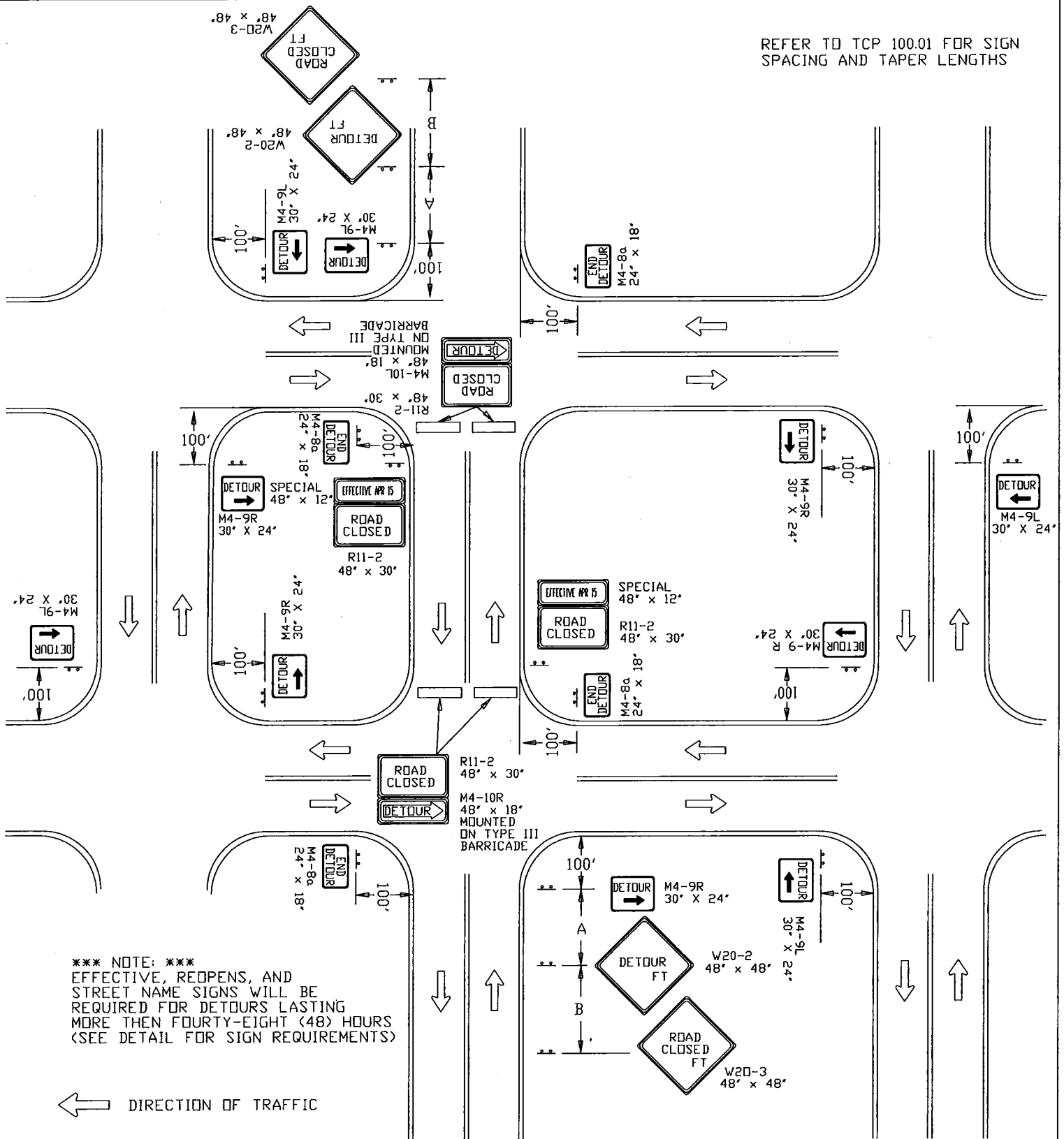
REFER TO TCP 100.01 FOR SIGN SPACING AND TAPER LENGTHS



DATE	07-01-16	TRAFFIC OPERATIONS SECTION MONTGOMERY COUNTY, MARYLAND	
DES. BY	MCDPWT	ROAD CLOSURE NON - INTERSECTION	
DRAWN BY	TCLE	APPROVED	
SCALE	NTS	CHIEF, TRAFFIC OPERATIONS SECTION	
		STANDARD TCP-110.01 — OF — SHEETS	

REVISION BY	DATE	APPROVED

REFER TO TCP 100.01 FOR SIGN SPACING AND TAPER LENGTHS



\*\*\* NOTE: \*\*\*  
EFFECTIVE, REDPENS, AND  
STREET NAME SIGNS WILL BE  
REQUIRED FOR DETOURS LASTING  
MORE THEN FOURTY-EIGHT (48) HOURS  
(SEE DETAIL FOR SIGN REQUIREMENTS)

← DIRECTION OF TRAFFIC

— SIGN

▨ WORK SITE

— TYPE III BARRICADE

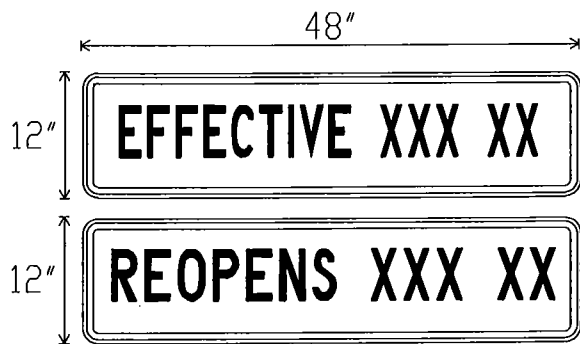
○ TRAFFIC DRUMS  
OR CONES

S<sup>1</sup>=30 FT.

S<sup>2</sup>=10 FT.

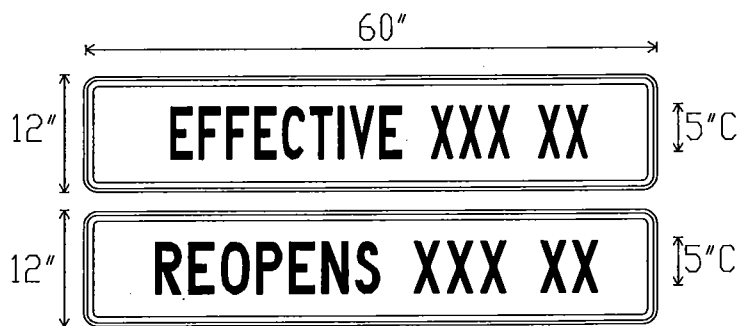
DATE	07-01-16			TRAFFIC OPERATIONS SECTION MONTGOMERY COUNTY, MARYLAND	
DES. BY	MCDPWT			TRAFFIC CONTROL FOR TEMPORARY DETOUR	
DRAWN BY	TCLE			APPROVED	
SCALE	NTS			CHIEF, TRAFFIC OPERATIONS SECTION	
				STANDARD TCP-110.02 — OF — SHEETS	

REVISION	DATE	APPROVED
BY		



BLACK LEGEND ON ORANGE BACKGROUND

48" X 12" SHALL BE MOUNTED ATOP  
R11-2 ROAD CLOSED SIGNS



BLACK LEGEND ON ORANGE BACKGROUND

60" X 12" SHALL BE MOUNTED ATOP  
R11-3 & R11-4 ROAD CLOSED SIGNS

ROAD CLOSED AND EFFECTIVE SIGNS SHALL BE PLACED TWO (2) WEEKS PRIOR TO THE ROAD CLOSURE. THE EFFECTIVE SIGN SHALL BE REMOVED AND REPLACED WITH THE REOPENS SIGN TWO DAYS AFTER THE ACTUAL DATE OF THE ROAD CLOSURE.



BLACK LEGEND ON WHITE BACKGROUND

FOR EXTENDED CLOSURES A "STREET NAME" SIGN  
SHALL BE MOUNTED ATOP ALL M4-9 (DETOUR) SIGNS  
ALONG ROADWAYS USED FOR THE DETOUR

IF ADDITIONAL LINES OF TEXT ARE NECESSARY,  
INCREASE HEIGHT IN INCREMENTS OF 12"

			DATE 07-01-16	TRAFFIC OPERATIONS SECTION MONTGOMERY COUNTY, MARYLAND
			DES. BY MCDPWT	
REVISION BY	DATE	APPROVED	DRAWN BY TCLE	SIGN DETAILS FOR TEMPORARY DETOUR
			SCALE	
			NTS	APPROVED _____ CHIEF, TRAFFIC OPERATIONS SECTION
			STANDARD TCP-110.02.01 ____ OF ____ SHEETS	